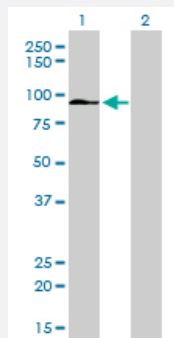


ZFYVE16 monoclonal antibody (M01), clone 4B9

Catalog # H00009765-M01

Size 100 ug

Applications

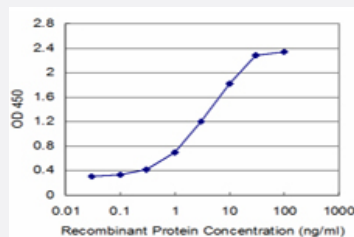


Western Blot (Transfected lysate)

Western Blot analysis of ZFYVE16 expression in transfected 293T cell line by ZFYVE16 monoclonal antibody (M01), clone 4B9.

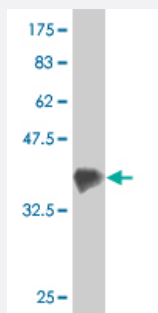
Lane 1: ZFYVE16 transfected lysate(88.4 KDa).

Lane 2: Non-transfected lysate.



Sandwich ELISA (Recombinant protein)

Detection limit for recombinant GST tagged ZFYVE16 is approximately 0.3ng/ml as a capture antibody.



Western Blot detection against Immunogen (36.74 KDa) .

Specification

Product Description

Mouse monoclonal antibody raised against a partial recombinant ZFYVE16.

Immunogen	ZFYVE16 (NP_055548, 1 a.a. ~ 100 a.a) partial recombinant protein with GST tag. MW of the GST tag alone is 26 KDa.
Sequence	MDSYFKA AVSDLDKLLDDFEQNPDEQDY LQDVQNAYDSNHCSVSSELASSQRTSLLPKDQECV NSCASSETS YGTNESSLNEKTLKGLTSIQNEKNVTGL
Host	Mouse
Reactivity	Human
Isotype	IgG2b Kappa
Quality Control Testing	Antibody Reactive Against Recombinant Protein. Western Blot detection against Immunogen (36.74 KDa) .
Storage Buffer	In 1x PBS, pH 7.4
Storage Instruction	Store at -20°C or lower. Aliquot to avoid repeated freezing and thawing.

Applications

- Western Blot (Transfected lysate)

Western Blot analysis of ZFYVE16 expression in transfected 293T cell line by ZFYVE16 monoclonal antibody (M01), clone 4B9.

Lane 1: ZFYVE16 transfected lysate(88.4 KDa).

Lane 2: Non-transfected lysate.

[Protocol Download](#)

- Western Blot (Recombinant protein)

[Protocol Download](#)

- Sandwich ELISA (Recombinant protein)

Detection limit for recombinant GST tagged ZFYVE16 is approximately 0.3ng/ml as a capture antibody.

[Protocol Download](#)

- ELISA

Gene Info — ZFYVE16

Entrez GeneID [9765](#)

GeneBank Accession# [NM_014733](#)

Protein Accession#	NP_055548
Gene Name	ZFYVE16
Gene Alias	DKFZp686E13162, ENDOFIN, KIAA0305
Gene Description	zinc finger, FYVE domain containing 16
Omim ID	608880
Gene Ontology	Hyperlink
Gene Summary	The ZFYVE16 gene encodes endofin, an endosomal protein implicated in regulating membrane trafficking. It is characterized by the presence of a phosphatidylinositol 3-phosphate-binding FYVE domain positioned in the middle of the molecule (Seet et al., 2004 [PubMed 14613930]).[supplied by OMIM]
Other Designations	endosome-associated FYVE-domain protein

Pathway

- [TGF-beta signaling pathway](#)