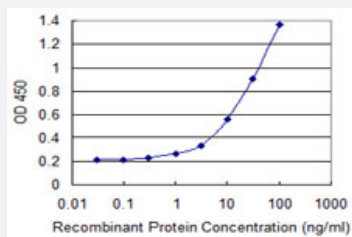


# SNPH monoclonal antibody (M03), clone 3B6

Catalog # H00009751-M03

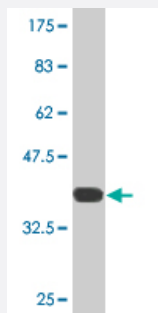
Size 100 ug

## Applications



### Sandwich ELISA (Recombinant protein)

Detection limit for recombinant GST tagged SNPH is 0.3 ng/ml as a capture antibody.



Western Blot detection against Immunogen (36.52 KDa) .

## Specification

### Product Description

Mouse monoclonal antibody raised against a partial recombinant SNPH.

### Immunogen

SNPH (NP\_055538.2, 251 a.a. ~ 348 a.a) partial recombinant protein with GST tag. MW of the GST tag alone is 26 KDa.

### Sequence

TLSRTDALEASSLLSSGVDCGTEETSLHSSFGLGPRFPASNTYEKLLCGMEAGVQASCMQERAI  
QTDFVQYQPDLDLTILEKVTQAQVCCTDPESGDR

### Host

Mouse

### Reactivity

Human

Interspecies Antigen Sequence	Mouse (85); Rat (87)
Isotype	IgG2a Kappa
Quality Control Testing	Antibody Reactive Against Recombinant Protein. Western Blot detection against Immunogen (36.52 KDa) .
Storage Buffer	In 1x PBS, pH 7.4
Storage Instruction	Store at -20°C or lower. Aliquot to avoid repeated freezing and thawing.

## Applications

- Western Blot (Recombinant protein)

[Protocol Download](#)

- Sandwich ELISA (Recombinant protein)

Detection limit for recombinant GST tagged SNPH is 0.3 ng/ml as a capture antibody.

[Protocol Download](#)

- ELISA

## Gene Info — SNPH

Entrez GeneID	<a href="#">9751</a>
GeneBank Accession#	<a href="#">NM_014723</a>
Protein Accession#	<a href="#">NP_055538.2</a>
Gene Name	SNPH
Gene Alias	KIAA0374, MGC46096, bA314N13.5
Gene Description	syntaphilin
Omim ID	<a href="#">604942</a>
Gene Ontology	<a href="#">Hyperlink</a>

**Gene Summary**

Syntaxin-1, synaptobrevin/VAMP, and SNAP25 interact to form the SNARE complex, which is required for synaptic vesicle docking and fusion. The protein encoded by this gene is membrane-associated and inhibits SNARE complex formation by binding free syntaxin-1. Expression of this gene appears to be brain-specific. [provided by RefSeq]

**Other Designations**

OTTHUMP00000070985