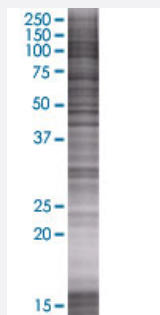


# SART3 293T Cell Transient Overexpression Lysate(Denatured)

Catalog # H00009733-T01

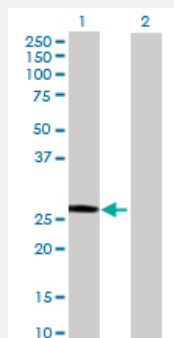
Size 100 uL

## Applications



### SDS-PAGE Gel

SART3 transfected lysate.



### Western Blot

Lane 1: SART3 transfected lysate ( 14.3 KDa)

Lane 2: Non-transfected lysate.

## Specification

Transfected Cell Line	293T
Plasmid	pCMV-SART3 full-length
Host	Human
Theoretical MW (kDa)	14.3
Interspecies Antigen Sequence	Mouse (71); Rat (68)

**Quality Control Testing**

Transient overexpression cell lysate was tested with Anti-SART3 antibody ([H00009733-B01](#)) by Western Blots.  
SDS-PAGE Gel  
SART3 transfected lysate.  
Western Blot  
Lane 1: SART3 transfected lysate ( 14.3 KDa)  
Lane 2: Non-transfected lysate.

**Storage Buffer**

1X Sample Buffer (50 mM Tris-HCl, 2% SDS, 10% glycerol, 300 mM 2-mercaptoethanol, 0.01% Bromophenol blue)

**Storage Instruction**

Store at -80°C. Aliquot to avoid repeated freezing and thawing.

## Applications

- Western Blot

## Gene Info — SART3

**Entrez GeneID**[9733](#)**GeneBank Accession#**[BC041638.1](#)**Protein Accession#**[AAH41638.1](#)**Gene Name**

SART3

**Gene Alias**

DSAP1, KIAA0156, MGC138188, P100, RP11-13G14, TIP110, p110, p110(nrb)

**Gene Description**

squamous cell carcinoma antigen recognized by T cells 3

**Omim ID**[611684](#)**Gene Ontology**[Hyperlink](#)**Gene Summary**

The protein encoded by this gene is an RNA-binding nuclear protein that is a tumor-rejection antigen. This antigen possesses tumor epitopes capable of inducing HLA-A24-restricted and tumor-specific cytotoxic T lymphocytes in cancer patients and may be useful for specific immunotherapy. This gene product is found to be an important cellular factor for HIV-1 gene expression and viral replication. It also associates transiently with U6 and U4/U6 snRNPs during the recycling phase of the spliceosome cycle. This encoded protein is thought to be involved in the regulation of mRNA splicing. [provided by RefSeq]

**Other Designations**

tat-interacting protein of 110 kDa