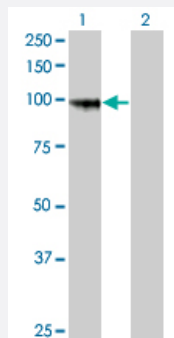


# PCDHGA8 monoclonal antibody (M01), clone 1C11

Catalog # H00009708-M01

Size 100 ug

## Applications

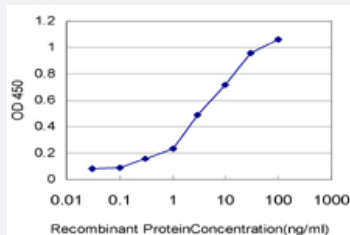


### Western Blot (Transfected lysate)

Western Blot analysis of PCDHGA8 expression in transfected 293T cell line by PCDHGA8 monoclonal antibody (M01), clone 1C11.

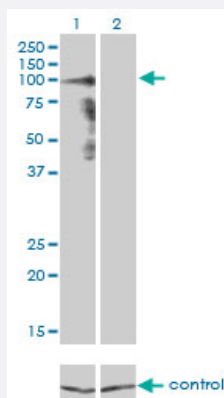
Lane 1: PCDHGA8 transfected lysate (101.48 kDa).

Lane 2: Non-transfected lysate.



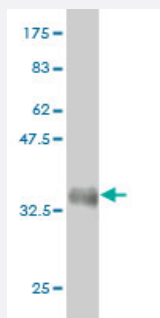
### Sandwich ELISA (Recombinant protein)

Detection limit for recombinant GST tagged PCDHGA8 is approximately 0.3 ng/ml as a capture antibody.



### RNAi Knockdown (Antibody validated)

Western blot analysis of PCDHGA8 over-expressed 293 cell line, cotransfected with PCDHGA8 Validated Chimera RNAi (Cat # H00009708-R01V) (Lane 2) or non-transfected control (Lane 1). Blot probed with PCDHGA8 monoclonal antibody (M01), clone 1C11 (Cat # H00009708-M01). GAPDH (36.1 kDa) used as specificity and loading control.



Western Blot detection against Immunogen (35.42 KDa) .

## Specification

<b>Product Description</b>	Mouse monoclonal antibody raised against a partial recombinant PCDHGA8.
<b>Immunogen</b>	PCDHGA8 (NP_114477, 357 a.a. ~ 444 a.a) partial recombinant protein with GST tag. MW of the GST tag alone is 26 KDa.
<b>Sequence</b>	LENSLPGTVIAFLSVHDQDSGKNGQVVCYTRDNLFPKLEKSIGNYYRLVTRKYLDRENVSYNITVM ASDLGTPPLSTETQIALHVAD
<b>Host</b>	Mouse
<b>Reactivity</b>	Human
<b>Interspecies Antigen Sequence</b>	Mouse (81); Rat (81)
<b>Isotype</b>	IgG2a Kappa
<b>Quality Control Testing</b>	Antibody Reactive Against Recombinant Protein. Western Blot detection against Immunogen (35.42 KDa) .
<b>Storage Buffer</b>	In 1x PBS, pH 7.4
<b>Storage Instruction</b>	Store at -20°C or lower. Aliquot to avoid repeated freezing and thawing.

## Applications

### ● Western Blot (Transfected lysate)

Western Blot analysis of PCDHGA8 expression in transfected 293T cell line by PCDHGA8 monoclonal antibody (M01), clone 1C11.

Lane 1: PCDHGA8 transfected lysate(101.48 KDa).

Lane 2: Non-transfected lysate.

[Protocol Download](#)

- Western Blot (Recombinant protein)

[Protocol Download](#)

- Sandwich ELISA (Recombinant protein)

Detection limit for recombinant GST tagged PCDHGA8 is approximately 0.3ng/ml as a capture antibody.

[Protocol Download](#)

- ELISA

- RNAi Knockdown (Antibody validated)

Western blot analysis of PCDHGA8 over-expressed 293 cell line, cotransfected with PCDHGA8 Validated Chimera RNAi ( Cat # H00009708-R01V ) (Lane 2) or non-transfected control (Lane 1). Blot probed with PCDHGA8 monoclonal antibody (M01), clone 1C11 (Cat # H00009708-M01 ). GAPDH ( 36.1 kDa ) used as specificity and loading control.

[Protocol Download](#)

## Gene Info — PCDHGA8

Entrez GeneID	<a href="#">9708</a>
---------------	----------------------

GeneBank Accession#	<a href="#">NM_032088</a>
---------------------	---------------------------

Protein Accession#	<a href="#">NP_114477</a>
--------------------	---------------------------

Gene Name	PCDHGA8
-----------	---------

Gene Alias	KIAA0327, PCDH-GAMMA-A8
------------	-------------------------

Gene Description	protocadherin gamma subfamily A, 8
------------------	------------------------------------

Omim ID	<a href="#">606295</a>
---------	------------------------

Gene Ontology	<a href="#">Hyperlink</a>
---------------	---------------------------

**Gene Summary**

This gene is a member of the protocadherin gamma gene cluster, one of three related clusters tandemly linked on chromosome five. These gene clusters have an immunoglobulin-like organization, suggesting that a novel mechanism may be involved in their regulation and expression. The gamma gene cluster includes 22 genes divided into 3 subfamilies. Subfamily A contains 12 genes, subfamily B contains 7 genes and 2 pseudogenes, and the more distantly related subfamily C contains 3 genes. The tandem array of 22 large, variable region exons are followed by a constant region, containing 3 exons shared by all genes in the cluster. Each variable region exon encodes the extracellular region, which includes 6 cadherin ectodomains and a transmembrane region. The constant region exons encode the common cytoplasmic region. These neural cadherin-like cell adhesion proteins most likely play a critical role in the establishment and function of specific cell-cell connections in the brain. Alternative splicing has been described for the gamma cluster genes. [provided by RefSeq]

**Other Designations**

-