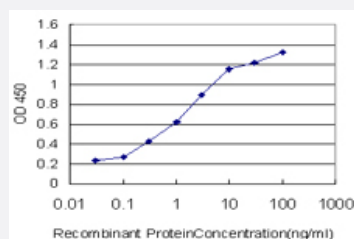


ULK2 monoclonal antibody (M10), clone 5E4

Catalog # H00009706-M10

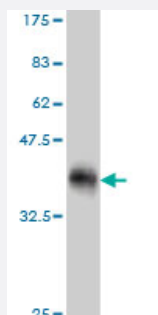
Size 100 ug

Applications



Sandwich ELISA (Recombinant protein)

Detection limit for recombinant GST tagged ULK2 is approximately 0.03ng/ml as a capture antibody.



Western Blot detection against Immunogen (36.52 KDa) .

Specification

Product Description	Mouse monoclonal antibody raised against a partial recombinant ULK2.
Immunogen	ULK2 (AAH34988, 743 a.a. ~ 843 a.a) partial recombinant protein with GST tag. MW of the GST tag alone is 26 KDa.
Sequence	FLRTRTTSVGPSNSGGSLCAMSGRVCVGSPGPGFGSSPPGAEAAAPSLRYVPYGASPPSLEGLI TFEAPELPEETLMEREHTDTRLRHLNVMLMFTECVLDL
Host	Mouse
Reactivity	Human

Interspecies Antigen Sequence	Mouse (93); Rat (93)
Isotype	IgG2a Kappa
Quality Control Testing	Antibody Reactive Against Recombinant Protein. Western Blot detection against Immunogen (36.52 KDa) .
Storage Buffer	In 1x PBS, pH 7.4
Storage Instruction	Store at -20°C or lower. Aliquot to avoid repeated freezing and thawing.

Applications

- Western Blot (Recombinant protein)

[Protocol Download](#)

- Sandwich ELISA (Recombinant protein)

Detection limit for recombinant GST tagged ULK2 is approximately 0.03ng/ml as a capture antibody.

[Protocol Download](#)

- ELISA

Gene Info — ULK2

Entrez GeneID	9706
GeneBank Accession#	BC034988
Protein Accession#	AAH34988
Gene Name	ULK2
Gene Alias	KIAA0623, Unc51.2
Gene Description	unc-51-like kinase 2 (C. elegans)
Omim ID	608650
Gene Ontology	Hyperlink

Gene Summary

This gene encodes a protein that is similar to a serine/threonine kinase in *C. elegans* which is involved in axonal elongation. The structure of this protein is similar to the *C. elegans* protein in that both proteins have an N-terminal kinase domain, a central proline/serine rich (PS) domain, and a C-terminal (C) domain. The gene is located within the Smith-Magenis syndrome region on chromosome 17. Alternatively spliced transcript variants encoding the same protein have been identified. [provided by RefSeq]

Other Designations

OTTHUMP00000065847|unc-51-like kinase 2

Pathway

- [mTOR signaling pathway](#)
- [Regulation of autophagy](#)

Disease

- [Parkinson disease](#)
- [Tobacco Use Disorder](#)