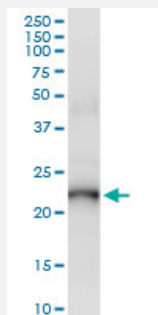


PDE4DIP (Human) IP-WB Antibody Pair

Catalog # H00009659-PW1

Size 1 Set

Applications



Immunoprecipitation of PDE4DIP transfected lysate using rabbit polyclonal anti-PDE4DIP and Protein A Magnetic Bead ([U0007](#)), and immunoblotted with mouse purified polyclonal anti-PDE4DIP.

Specification

Product Description	This IP-WB antibody pair set comes with one antibody for immunoprecipitation and another to detect the precipitated protein in western blot.
Reactivity	Human
Interspecies Antigen Sequence	Mouse (75); Rat (80)
Quality Control Testing	Immunoprecipitation-Western Blot (IP-WB) Immunoprecipitation of PDE4DIP transfected lysate using rabbit polyclonal anti-PDE4DIP and Protein A Magnetic Bead (U0007), and immunoblotted with mouse purified polyclonal anti-PDE4DIP.
Supplied Product	Antibody pair set content: 1. Antibody pair for IP: rabbit polyclonal anti-PDE4DIP (300 ul) 2. Antibody pair for WB: mouse purified polyclonal anti-PDE4DIP (50 ug)
Storage Instruction	Store reagents of the antibody pair set at -20°C or lower. Please aliquot to avoid repeated freeze thaw cycle. Reagents should be returned to -20°C storage immediately after use.

Applications

- Immunoprecipitation-Western Blot

[Protocol Download](#)

Gene Info — PDE4DIP

Entrez GeneID	9659
Gene Name	PDE4DIP
Gene Alias	CMYA2, DKFZp781J054, MGC75440, MMGL
Gene Description	phosphodiesterase 4D interacting protein
Omim ID	608117
Gene Ontology	Hyperlink
Other Designations	OTTHUMP00000015726 OTTHUMP00000015727 cardiomyopathy associated 2 myomegalin

Disease

- [Tobacco Use Disorder](#)