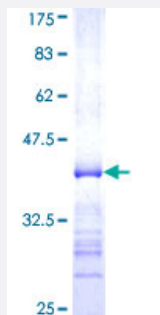


SOCS5 (Human) Recombinant Protein (Q01)

Catalog # H00009655-Q01

Size 25 ug, 10 ug

Applications



Specification

Product Description	Human SOCS5 partial ORF (AAH32862, 1 a.a. - 110 a.a.) recombinant protein with GST-tag at N-terminal.
Sequence	MDKVGKMWNFKYRCQNLFGHEGGSRSSENVDMNSNRCLSVKEKNISIGDSTPQQQSSPLRENIALQLGLSPSKNSSRRNQNCATEIPQVEISIEKDNDSCVTPGTRLAR
Host	Wheat Germ (in vitro)
Theoretical MW (kDa)	37.73
Interspecies Antigen Sequence	Mouse (94); Rat (95)
Preparation Method	in vitro wheat germ expression system
Purification	Glutathione Sepharose 4 Fast Flow
Quality Control Testing	12.5% SDS-PAGE Stained with Coomassie Blue.
Storage Buffer	50 mM Tris-HCl, 10 mM reduced Glutathione, pH=8.0 in the elution buffer.
Storage Instruction	Store at -80°C. Aliquot to avoid repeated freezing and thawing.
Note	Best use within three months from the date of receipt of this protein.

Applications

- Enzyme-linked Immunoabsorbent Assay
- Western Blot (Recombinant protein)
- Antibody Production
- Protein Array

Gene Info — SOCS5

Entrez GeneID [9655](#)

GeneBank Accession# [BC032862](#)

Protein Accession# [AAH32862](#)

Gene Name SOCS5

Gene Alias CIS6, CISH6, Cish5, KIAA0671, SOCS-5

Gene Description suppressor of cytokine signaling 5

Omim ID [607094](#)

Gene Ontology [Hyperlink](#)

Gene Summary The protein encoded by this gene contains a SH2 domain and a SOCS BOX domain. The protein thus belongs to the suppressor of cytokine signaling (SOCS) family, also known as STAT-induced STAT inhibitor (SSI) protein family. SOCS family members are known to be cytokine-inducible negative regulators of cytokine signaling. The specific function of this protein has not yet been determined. Two alternatively spliced transcript variants encoding an identical protein have been reported. [provided by RefSeq]

Other Designations cytokine-inducible SH2 protein 6

Pathway

- [Jak-STAT signaling pathway](#)

Disease

- [Diabetes Mellitus](#)
- [Genetic Predisposition to Disease](#)