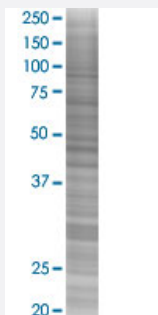


HS2ST1 293T Cell Transient Overexpression Lysate(Denatured)

Catalog # H00009653-T02

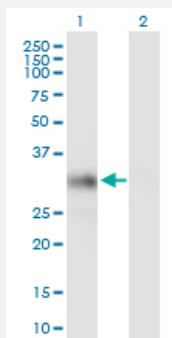
Size 100 uL

Applications



SDS-PAGE Gel

HS2ST1 transfected lysate.



Western Blot

Lane 1: HS2ST1 transfected lysate (26.80 KDa)

Lane 2: Non-transfected lysate.

Specification

Transfected Cell Line	293T
Plasmid	pCMV-HS2ST1 full-length
Host	Human
Theoretical MW (kDa)	26.8
Interspecies Antigen Sequence	Mouse (96); Rat (97)

Quality Control Testing

Transient overexpression cell lysate was tested with Anti-HS2ST1 antibody ([H00009653-B01P](#)) by Western Blots.
 SDS-PAGE Gel
 HS2ST1 transfected lysate.
 Western Blot
 Lane 1: HS2ST1 transfected lysate (26.80 KDa)
 Lane 2: Non-transfected lysate.

Storage Buffer

1X Sample Buffer (50 mM Tris-HCl, 2% SDS, 10% glycerol, 300 mM 2-mercaptoethanol, 0.01% Bromophenol blue)

Storage Instruction

Store at -80°C. Aliquot to avoid repeated freezing and thawing.

Applications

- Western Blot

Gene Info — HS2ST1

Entrez GeneID

[9653](#)

GeneBank Accession#

[BC025990.1](#)

Protein Accession#

[AAH25990.1](#)

Gene Name

HS2ST1

Gene Alias

FLJ11317, KIAA0448, MGC131986, dJ604K5.2

Gene Description

heparan sulfate 2-O-sulfotransferase 1

Omim ID

[604844](#)

Gene Ontology

[Hyperlink](#)

Gene Summary

Heparan sulfate biosynthetic enzymes are key components in generating a myriad of distinct heparan sulfate fine structures that carry out multiple biologic activities. This gene encodes a member of the heparan sulfate biosynthetic enzyme family that transfers sulfate to the 2 position of the iduronic acid residue of heparan sulfate. The disruption of this gene resulted in no kidney formation in knockout embryonic mice, indicating that the absence of this enzyme may interfere with the signaling required for kidney formation. Two alternatively spliced transcript variants that encode different proteins have been found for this gene. [provided by RefSeq]

Other Designations

OTTHUMP00000011908

Pathway

- [Heparan sulfate biosynthesis](#)

Disease

- [Tobacco Use Disorder](#)