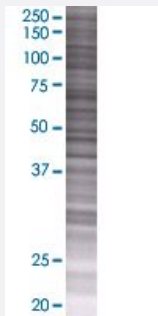


MTFR1 293T Cell Transient Overexpression Lysate(Denatured)

Catalog # H00009650-T01

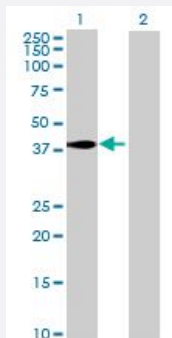
Size 100 uL

Applications



SDS-PAGE Gel

MTFR1 transfected lysate.



Western Blot

Lane 1: MTFR1 transfected lysate (37 KDa)

Lane 2: Non-transfected lysate.

Specification

Transfected Cell Line 293T

Plasmid pCMV-MTFR1 full-length

Host Human

Theoretical MW (kDa) 37

Quality Control Testing Transient overexpression cell lysate was tested with Anti-MTFR1 antibody ([H00009650-B01](#)) by Western Blots.
 SDS-PAGE Gel
 MTFR1 transfected lysate.
 Western Blot
 Lane 1: MTFR1 transfected lysate (37 KDa)
 Lane 2: Non-transfected lysate.

Storage Buffer

1X Sample Buffer (50 mM Tris-HCl, 2% SDS, 10% glycerol, 300 mM 2-mercaptoethanol, 0.01% Bromophenol blue)

Storage Instruction

Store at -80°C. Aliquot to avoid repeated freezing and thawing.

Applications

- Western Blot

Gene Info — MTFR1

Entrez GeneID[9650](#)**GeneBank Accession#**[BC043498](#)**Protein Accession#**[AAH43498](#)**Gene Name**

MTFR1

Gene Alias

CHPPR, FAM54A2, KIAA0009

Gene Description

mitochondrial fission regulator 1

Gene Ontology[Hyperlink](#)**Gene Summary**

This gene encodes a mitochondrial protein that is characterized by a poly-proline rich region. A chicken homolog of this protein promotes mitochondrial fission and the mouse homolog protects cells from oxidative stress. A related pseudogene of this gene is found on chromosome X. [provided by RefSeq]

Other Designations

chondrocyte protein with a poly-proline region||likely ortholog of chicken chondrocyte protein with a poly proline region