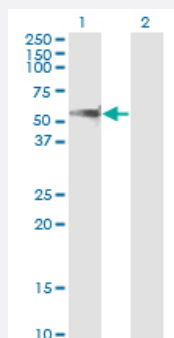


PPM1F monoclonal antibody (M02), clone 1G10

Catalog # H00009647-M02

Size 100 ug

Applications

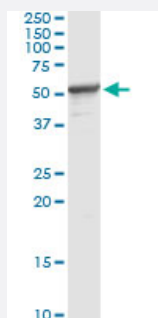


Western Blot (Transfected lysate)

Western Blot analysis of PPM1F expression in transfected 293T cell line by PPM1F monoclonal antibody (M02), clone 1G10.

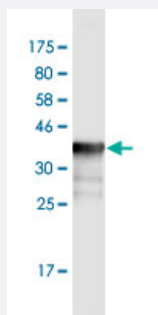
Lane 1: PPM1F transfected lysate(49.8 KDa).

Lane 2: Non-transfected lysate.



Immunoprecipitation

Immunoprecipitation of PPM1F transfected lysate using anti-PPM1F monoclonal antibody and Protein A Magnetic Bead, and immunoblotted with PPM1F MaxPab rabbit polyclonal antibody.



Western Blot detection against Immunogen (36.74 KDa) .

Specification

Product Description

Mouse monoclonal antibody raised against a partial recombinant PPM1F.

Immunogen	PPM1F (NP_055449, 1 a.a. ~ 100 a.a) partial recombinant protein with GST tag. MW of the GST tag alone is 26 KDa.
Sequence	MSSGAPQKSSPMASGAEETPGFLDTLLQDFPALLNPEDPLPWKAPGTVLSQEEVEGELAEELAM GFLGSRKAPPPLAAALAHEAVSQLLQTDLSEFRKLPR
Host	Mouse
Reactivity	Human
Interspecies Antigen Sequence	Mouse (79); Rat (79)
Isotype	IgG2a Kappa
Quality Control Testing	Antibody Reactive Against Recombinant Protein. Western Blot detection against Immunogen (36.74 KDa) .
Storage Buffer	In 1x PBS, pH 7.4
Storage Instruction	Store at -20°C or lower. Aliquot to avoid repeated freezing and thawing.

Applications

- Western Blot (Transfected lysate)

Western Blot analysis of PPM1F expression in transfected 293T cell line by PPM1F monoclonal antibody (M02), clone 1G10.

Lane 1: PPM1F transfected lysate(49.8 KDa).

Lane 2: Non-transfected lysate.

[Protocol Download](#)

- Western Blot (Recombinant protein)

[Protocol Download](#)

- Immunoprecipitation

Immunoprecipitation of PPM1F transfected lysate using anti-PPM1F monoclonal antibody and Protein A Magnetic Bead, and immunoblotted with PPM1F MaxPab rabbit polyclonal antibody.

[Protocol Download](#)

- ELISA

Gene Info — PPM1F

Entrez GeneID	9647
GeneBank Accession#	NM_014634
Protein Accession#	NP_055449
Gene Name	PPM1F
Gene Alias	CaMKPase, FEM-2, KIAA0015, POPX2, hFEM-2
Gene Description	protein phosphatase 1F (PP2C domain containing)
Gene Ontology	Hyperlink
Gene Summary	<p>The protein encoded by this gene is a member of the PP2C family of Ser/Thr protein phosphatases. PP2C family members are known to be negative regulators of cell stress response pathways. This phosphatase can interact with Rho guanine nucleotide exchange factors (PIX), and thus block the effects of p21-activated kinase 1 (PAK), a protein kinase mediating biological effects downstream of Rho GTPases. Calcium/calmodulin-dependent protein kinase II gamma (CAMK2G/CAMK-II) is found to be one of the substrates of this phosphatase. The overexpression of this phosphatase or CAMK2G has been shown to mediate caspase-dependent apoptosis. An alternatively spliced transcript variant has been identified, but its full-length nature has not been determined. [provided by RefSeq]</p>
Other Designations	Ca(2+)/calmodulin-dependent protein kinase phosphatase CaM-kinase phosphatase PP2C phosphatase partner of PIX 2 protein phosphatase 1F

Disease

- [Kidney Failure](#)
- [Tobacco Use Disorder](#)