

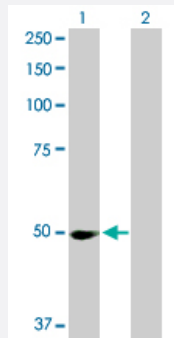
MaxPab®

PPM1F purified MaxPab rabbit polyclonal antibody (D01P)

Catalog # H00009647-D01P

Size 100 ug

Applications



Western Blot (Transfected lysate)

Western Blot analysis of PPM1F expression in transfected 293T cell line ([H00009647-T02](#)) by PPM1F MaxPab polyclonal antibody.

Lane 1: PPM1F transfected lysate(49.80 KDa).

Lane 2: Non-transfected lysate.

Specification

Product Description

Rabbit polyclonal antibody raised against a full-length human PPM1F protein.

Immunogen

PPM1F (NP_055449.1, 1 a.a. ~ 454 a.a) full-length human protein.

Sequence

MSSGAPQKSSPMASGAETPGFLDTLLQDFPALLNPEDPLPWKAPGTVLSQEEVEGELAEAM
GFLGSRKAPPPLAAALAHEAVSQLLQTDLSEFRKLPEEEEEEDDDDEEEKAPVTLLDAQSLAQ
SFFNRLWEVAGQWQKQVPLAARASQRQWLVSIAIRNTRRKMEDRHVSLPSFNQLFGLSDPVN
RAYFAVFDGHGGVDAARYAAVHVHTNAARQPELPTDPEGALREAFRRTDQMFLRKAKRERLQS
GTTGVCALIAGATLHVAWLGDSQVILVQQGQVVKLMEPHRPERQDEKARIEALGGFVSHMDCWR
VNGTLAVSRAIGDVFQKPYVSGEADAASRALTGSEDYLLACDGGFDVVPHQEVVGLVQSHLTR
QQGSGLRVAEELVAAARERGSHDNITVMVFLRDPQELLEGGNQGEQDPQAEGRQRDLPSLPL
EPETQAPPRS

Host

Rabbit

Reactivity

Human

Interspecies Antigen Sequence

Mouse (79); Rat (79)

Quality Control Testing

Antibody reactive against mammalian transfected lysate.

Storage Buffer

In 1x PBS, pH 7.4

Storage Instruction

Store at -20°C or lower. Aliquot to avoid repeated freezing and thawing.

Applications

- Western Blot (Transfected lysate)

Western Blot analysis of PPM1F expression in transfected 293T cell line ([H00009647-T02](#)) by PPM1F MaxPab polyclonal antibody.

Lane 1: PPM1F transfected lysate(49.80 KDa).

Lane 2: Non-transfected lysate.

[Protocol Download](#)

Gene Info — PPM1F

Entrez GeneID
[9647](#)
GeneBank Accession#
[NM_014634](#)
Protein Accession#
[NP_055449.1](#)
Gene Name

PPM1F

Gene Alias

CaMKPase, FEM-2, KIAA0015, POPX2, hFEM-2

Gene Description

protein phosphatase 1F (PP2C domain containing)

Gene Ontology
[Hyperlink](#)
Gene Summary

The protein encoded by this gene is a member of the PP2C family of Ser/Thr protein phosphatases. PP2C family members are known to be negative regulators of cell stress response pathways. This phosphatase can interact with Rho guanine nucleotide exchange factors (PIX), and thus block the effects of p21-activated kinase 1 (PAK), a protein kinase mediating biological effects downstream of Rho GTPases. Calcium/calmodulin-dependent protein kinase II gamma (CAMK2G/CAMK-II) is found to be one of the substrates of this phosphatase. The overexpression of this phosphatase or CAMK2G has been shown to mediate caspase-dependent apoptosis. An alternatively spliced transcript variant has been identified, but its full-length nature has not been determined. [provided by RefSeq]

Other Designations

Ca(2+)/calmodulin-dependent protein kinase phosphatase|CaM-kinase phosphatase|PP2C phosphatase|partner of PIX 2|protein phosphatase 1F

Disease

- [Kidney Failure](#)
- [Tobacco Use Disorder](#)