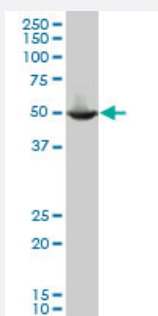


# PPM1F polyclonal antibody (A01)

Catalog # H00009647-A01

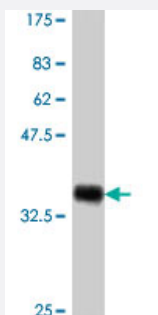
Size 50 uL

## Applications



### Western Blot (Cell lysate)

PPM1F polyclonal antibody (A01), Lot # 051024JC01 Western Blot analysis of PPM1F expression in K-562 ( Cat # L009V1 ).



Western Blot detection against Immunogen (37.11 KDa) .

## Specification

Product Description	Mouse polyclonal antibody raised against a partial recombinant PPM1F.
Immunogen	PPM1F (NP_055449, 1 a.a. ~ 100 a.a) partial recombinant protein with GST tag.
Sequence	MSSGAPQKSSPMASGAEEETPGFLDTLLQDFPALLNPEDPLPWKAPGTVLSQEEVEGELAEELAM GFLGSRKAPPPLAAALAHEAVSQLLQTDLSEFRKLPR
Host	Mouse
Reactivity	Human
Interspecies Antigen Sequence	Mouse (79); Rat (79)

**Quality Control Testing**

Antibody Reactive Against Recombinant Protein.  
Western Blot detection against Immunogen (37.11 KDa) .

**Storage Buffer**

50 % glycerol

**Storage Instruction**

Store at -20°C or lower. Aliquot to avoid repeated freezing and thawing.

## Applications

- Western Blot (Cell lysate)

PPM1F polyclonal antibody (A01), Lot # 051024JC01 Western Blot analysis of PPM1F expression in K-562 ( Cat # L009V1 ).

[Protocol Download](#)

- Western Blot (Recombinant protein)

[Protocol Download](#)

- ELISA

## Gene Info — PPM1F

**Entrez GeneID**

[9647](#)

**GeneBank Accession#**

[NM\\_014634](#)

**Protein Accession#**

[NP\\_055449](#)

**Gene Name**

PPM1F

**Gene Alias**

CaMKPase, FEM-2, KIAA0015, POPX2, hFEM-2

**Gene Description**

protein phosphatase 1F (PP2C domain containing)

**Gene Ontology**

[Hyperlink](#)

**Gene Summary**

The protein encoded by this gene is a member of the PP2C family of Ser/Thr protein phosphatases. PP2C family members are known to be negative regulators of cell stress response pathways. This phosphatase can interact with Rho guanine nucleotide exchange factors (PIX), and thus block the effects of p21-activated kinase 1 (PAK), a protein kinase mediating biological effects downstream of Rho GTPases. Calcium/calmodulin-dependent protein kinase II gamma (CAMK2G/CAMK-II) is found to be one of the substrates of this phosphatase. The overexpression of this phosphatase or CAMK2G has been shown to mediate caspase-dependent apoptosis. An alternatively spliced transcript variant has been identified, but its full-length nature has not been determined. [provided by RefSeq]

**Other Designations**

Ca(2+)/calmodulin-dependent protein kinase phosphatase|CaM-kinase phosphatase|PP2C phosphatase|partner of PIX 2|protein phosphatase 1F

---

**Disease**

- [Kidney Failure](#)
- [Tobacco Use Disorder](#)