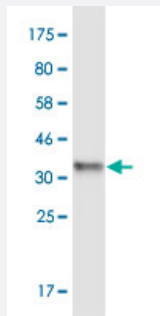


CLCA2 monoclonal antibody (M05), clone 1D5

Catalog # H00009635-M05

Size 100 ug

Applications



Western Blot detection against Immunogen (36.85 KDa) .

Specification

Product Description	Mouse monoclonal antibody raised against a partial recombinant CLCA2.
Immunogen	CLCA2 (NP_006527, 300 a.a. ~ 400 a.a) partial recombinant protein with GST tag. MW of the GST tag alone is 26 KDa.
Sequence	PTFSLVQAGDKVVCLVLDVSSKMAEADRLQLQQAEEFYLMQVEIHTFVGIAFDSKGEIRAQLHQINSNDDRKLLVSYLPTTVSAKTDISICSLKKG
Host	Mouse
Reactivity	Human
Isotype	IgG2a Kappa
Quality Control Testing	Antibody Reactive Against Recombinant Protein. Western Blot detection against Immunogen (36.85 KDa) .
Storage Buffer	In 1x PBS, pH 7.4
Storage Instruction	Store at -20°C or lower. Aliquot to avoid repeated freezing and thawing.

Applications

- Western Blot (Recombinant protein)

[Protocol Download](#)

- ELISA

Gene Info — CLCA2

Entrez GeneID [9635](#)

GeneBank Accession# [NM_006536](#)

Protein Accession# [NP_006527](#)

Gene Name CLCA2

Gene Alias CACC, CACC3, CLCRG2, CaCC-3, FLJ97885

Gene Description chloride channel regulator 2

Omim ID [604003](#)

Gene Ontology [Hyperlink](#)

Gene Summary

The protein encoded by this gene belongs to the calcium sensitive chloride conductance protein family. To date, all members of this gene family map to the same site on chromosome 1p31-p22 and share high degrees of homology in size, sequence and predicted structure, but differ significantly in their tissue distributions. Since this protein is expressed predominantly in trachea and lung, it is suggested to play a role in the complex pathogenesis of cystic fibrosis. It may also serve as adhesion molecule for lung metastatic cancer cells, mediating vascular arrest and colonization, and furthermore, it has been implicated to act as a tumor suppressor gene for breast cancer. [provided by RefSeq]

Other Designations

CLCA family member 2, chloride channel regulator[OTTHUMP00000011911|calcium-activated chloride channel protein 3|calcium-activated chloride channel-2|chloride channel, calcium activated, family member 2]

Pathway

- [Olfactory transduction](#)

Disease

- [Birth Weight](#)

- [Breast cancer](#)
- [Breast Neoplasms](#)
- [Genetic Predisposition to Disease](#)
- [Glioblastoma](#)
- [Glioma](#)
- [Leukemia](#)
- [Meningeal Neoplasms](#)
- [Meningioma](#)