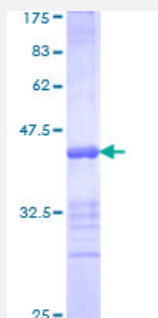


MTL5 (Human) Recombinant Protein (Q01)

Catalog # H00009633-Q01

Size 25 ug, 10 ug

Applications



Specification

Product Description	Human MTL5 partial ORF (NP_004914, 399 a.a. - 508 a.a.) recombinant protein with GST-tag at N-terminal.
Sequence	GCKNYEESPERKTLMSMPNYMQTGGLEGSHYLPPTKFSGLPRFSHDRRPSSCISWEVVEATCA CLLAQGEEAEKEHCSKCLAEQMILEEFGRCLSQILHTEFKSKGLKME
Host	Wheat Germ (in vitro)
Theoretical MW (kDa)	37.84
Interspecies Antigen Sequence	Mouse (54); Rat (54)
Preparation Method	in vitro wheat germ expression system
Purification	Glutathione Sepharose 4 Fast Flow
Quality Control Testing	12.5% SDS-PAGE Stained with Coomassie Blue.
Storage Buffer	50 mM Tris-HCl, 10 mM reduced Glutathione, pH=8.0 in the elution buffer.
Storage Instruction	Store at -80°C. Aliquot to avoid repeated freezing and thawing.
Note	Best use within three months from the date of receipt of this protein.

Applications

- Enzyme-linked Immunoabsorbent Assay
- Western Blot (Recombinant protein)
- Antibody Production
- Protein Array

Gene Info — MTL5

Entrez GeneID [9633](#)

GeneBank Accession# [NM_004923](#)

Protein Accession# [NP_004914](#)

Gene Name MTL5

Gene Alias CXCDC2, MTLT, TESMIN

Gene Description metallothionein-like 5, testis-specific (tesmin)

Omim ID [604374](#)

Gene Ontology [Hyperlink](#)

Gene Summary Metallothionein proteins are highly conserved low-molecular-weight cysteine-rich proteins that are induced by and bind to heavy metal ions and have no enzymatic activity. They may play a central role in the regulation of cell growth and differentiation and are involved in spermatogenesis. This gene encodes a metallothionein-like protein which has been shown to be expressed differentially in mouse testis and ovary. Two transcript variants encoding different isoforms have been found for this gene. [provided by RefSeq]

Other Designations CXC domain containing 2|metallothionein-like 5, testis-specific