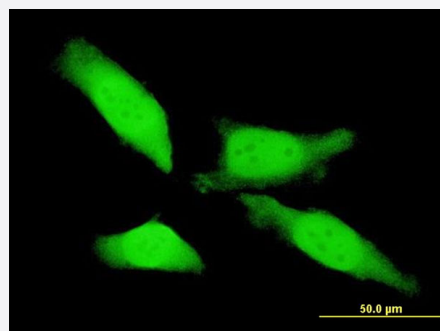


MTL5 monoclonal antibody (M01), clone 4H4

Catalog # H00009633-M01

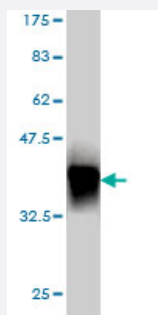
Size 100 ug

Applications



Immunofluorescence

Immunofluorescence of monoclonal antibody to MTL5 on HeLa cell . [antibody concentration 10 ug/ml]



Western Blot detection against Immunogen (37.84 KDa) .

Specification

Product Description	Mouse monoclonal antibody raised against a partial recombinant MTL5.
Immunogen	MTL5 (NP_004914, 399 a.a. ~ 508 a.a) partial recombinant protein with GST tag. MW of the GST tag alone is 26 KDa.
Sequence	GCKNYEESPERKTLMSMPNYMQTGGLEGSHYLPPTKFSGLPFRSHDRRPSSCISWEVVEATCA CLLAQGEEAEKEHCSKCLAEQMILEEFGRCLSQILHTEFKSKGLKME
Host	Mouse
Reactivity	Human

Interspecies Antigen Sequence	Mouse (54); Rat (54)
Isotype	IgG2a Kappa
Quality Control Testing	Antibody Reactive Against Recombinant Protein. Western Blot detection against Immunogen (37.84 KDa) .
Storage Buffer	In 1x PBS, pH 7.4
Storage Instruction	Store at -20°C or lower. Aliquot to avoid repeated freezing and thawing.

Applications

- Western Blot (Recombinant protein)

[Protocol Download](#)

- ELISA
- Immunofluorescence

Immunofluorescence of monoclonal antibody to MTL5 on HeLa cell . [antibody concentration 10 ug/ml]

Gene Info — MTL5

Entrez GeneID	9633
GeneBank Accession#	NM_004923
Protein Accession#	NP_004914
Gene Name	MTL5
Gene Alias	CXCDC2, MTLT, TESMIN
Gene Description	metallothionein-like 5, testis-specific (tesmin)
Omim ID	604374
Gene Ontology	Hyperlink

Gene Summary

Metallothionein proteins are highly conserved low-molecular-weight cysteine-rich proteins that are induced by and bind to heavy metal ions and have no enzymatic activity. They may play a central role in the regulation of cell growth and differentiation and are involved in spermatogenesis. This gene encodes a metallothionein-like protein which has been shown to be expressed differentially in mouse testis and ovary. Two transcript variants encoding different isoforms have been found for this gene. [provided by RefSeq]

Other Designations

CXC domain containing 2|metallothionein-like 5, testis-specific