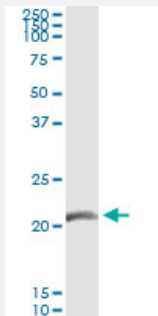


GUCA1C (Human) IP-WB Antibody Pair

Catalog # H00009626-PW2

Size 1 Set

Applications



Immunoprecipitation of GUCA1C transfected lysate using mouse monoclonal anti-GUCA1C and Protein A Magnetic Bead ([U0007](#)), and immunoblotted with rabbit polyclonal anti-GUCA1C.

Specification

Product Description	This IP-WB antibody pair set comes with one antibody for immunoprecipitation and another to detect the precipitated protein in western blot.
Reactivity	Human
Quality Control Testing	Immunoprecipitation-Western Blot (IP-WB) Immunoprecipitation of GUCA1C transfected lysate using mouse monoclonal anti-GUCA1C and Protein A Magnetic Bead (U0007), and immunoblotted with rabbit polyclonal anti-GUCA1C.
Supplied Product	Antibody pair set content: 1. Antibody pair for IP: mouse monoclonal anti-GUCA1C (300 ug) 2. Antibody pair for WB: rabbit polyclonal anti-GUCA1C (50 ul)
Storage Instruction	Store reagents of the antibody pair set at -20°C or lower. Please aliquot to avoid repeated freeze thaw cycle. Reagents should be returned to -20°C storage immediately after use.

Applications

- Immunoprecipitation-Western Blot

[Protocol Download](#)

Gene Info — GUCA1C

Entrez GeneID	9626
Gene Name	GUCA1C
Gene Alias	GCAP3, MGC120158, MGC120159
Gene Description	guanylate cyclase activator 1C
Omim ID	605128
Gene Ontology	Hyperlink
Other Designations	guanylyl cyclase-activating protein 3

Pathway

- [Olfactory transduction](#)