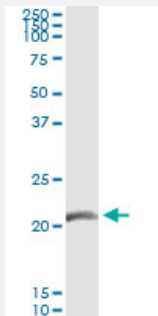


GUCA1C monoclonal antibody (M03), clone 3F10

Catalog # H00009626-M03

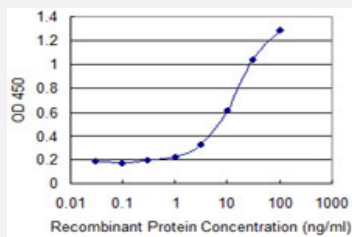
Size 100 ug

Applications



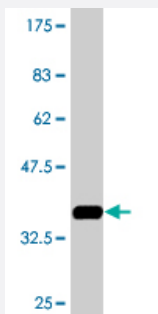
Immunoprecipitation

Immunoprecipitation of GUCA1C transfected lysate using anti-GUCA1C monoclonal antibody and Protein A Magnetic Bead, and immunoblotted with GUCA1C MaxPab rabbit polyclonal antibody.



Sandwich ELISA (Recombinant protein)

Detection limit for recombinant GST tagged GUCA1C is 0.3 ng/ml as a capture antibody.



Western Blot detection against Immunogen (36.74 KDa) .

Specification

Product Description

Mouse monoclonal antibody raised against a partial recombinant GUCA1C.

Immunogen	GUCA1C (NP_005450.2, 110 a.a. ~ 209 a.a) partial recombinant protein with GST tag. MW of the GST tag alone is 26 KDa.
Sequence	KNKLLDMFMAVQALNGQQTLSPPEEFINLVFHKIDINNDGELTLEEFINGMAKDQDLLEIVYKSFDFS NVLRVICNGKQPDMETDSSKSPDKAGLGKVKMK
Host	Mouse
Reactivity	Human
Isotype	IgG2a Kappa
Quality Control Testing	Antibody Reactive Against Recombinant Protein. Western Blot detection against Immunogen (36.74 KDa) .
Storage Buffer	In 1x PBS, pH 7.4
Storage Instruction	Store at -20°C or lower. Aliquot to avoid repeated freezing and thawing.

Applications

- Western Blot (Recombinant protein)

[Protocol Download](#)

- Immunoprecipitation

Immunoprecipitation of GUCA1C transfected lysate using anti-GUCA1C monoclonal antibody and Protein A Magnetic Bead, and immunoblotted with GUCA1C MaxPab rabbit polyclonal antibody.

[Protocol Download](#)

- Sandwich ELISA (Recombinant protein)

Detection limit for recombinant GST tagged GUCA1C is 0.3 ng/ml as a capture antibody.

[Protocol Download](#)

- ELISA

Gene Info — GUCA1C

Entrez GeneID [9626](#)

GeneBank Accession# [NM_005459](#)

Protein Accession#	NP_005450.2
Gene Name	GUCA1C
Gene Alias	GCAP3, MGC120158, MGC120159
Gene Description	guanylate cyclase activator 1C
Omim ID	605128
Gene Ontology	Hyperlink
Other Designations	guanylyl cyclase-activating protein 3

Pathway

- [Olfactory transduction](#)