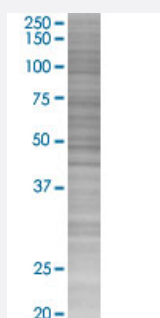


MTRF1 293T Cell Transient Overexpression Lysate(Denatured)

Catalog # H00009617-T03

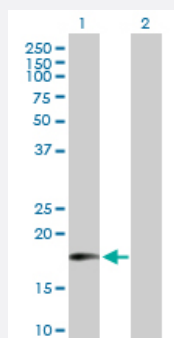
Size 100 uL

Applications



SDS-PAGE Gel

MTRF1 transfected lysate.



Western Blot

Lane 1: MTRF1 transfected lysate (18.20 KDa)

Lane 2: Non-transfected lysate.

Specification

Transfected Cell Line	293T
Plasmid	pCMV-MTRF1 full-length
Host	Human
Theoretical MW (kDa)	18.2
Interspecies Antigen Sequence	Mouse (66); Rat (65)

Quality Control Testing

Transient overexpression cell lysate was tested with Anti-MTRF1 antibody ([H00009617-B01P](#)) by Western Blots.
SDS-PAGE Gel
MTRF1 transfected lysate.
Western Blot
Lane 1: MTRF1 transfected lysate (18.20 KDa)
Lane 2: Non-transfected lysate.

Storage Buffer

1X Sample Buffer (50 mM Tris-HCl, 2% SDS, 10% glycerol, 300 mM 2-mercaptoethanol, 0.01% Bromophenol blue)

Storage Instruction

Store at -80°C. Aliquot to avoid repeated freezing and thawing.

Applications

- Western Blot

Gene Info — MTRF1

Entrez GeneID[9617](#)**GeneBank Accession#**[ENST00000239852](#)**Protein Accession#**[ENSP00000239852](#)**Gene Name**

MTRF1

Gene Alias

MGC47721, MRF1, MTTRF1, RF1

Gene Description

mitochondrial translational release factor 1

Omim ID[604601](#)**Gene Ontology**[Hyperlink](#)**Gene Summary**

The protein encoded by this gene was determined by in silico methods to be a mitochondrial protein with similarity to the peptide chain release factors (RFs) discovered in bacteria and yeast. The peptide chain release factors direct the termination of translation in response to the peptide chain termination codons. Initially thought to have a role in the termination of mitochondria protein synthesis, a recent publication found no mitochondrial translation release functionality. Multiple alternatively spliced transcript variants have been suggested by mRNA and EST data; however, their full-length natures are not clear. [provided by RefSeq]

Other Designations

OTTHUMP00000018315|OTTHUMP00000018316|mitochondrial peptide chain release factor 1