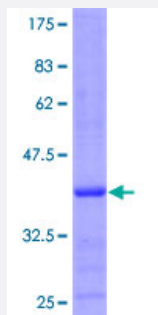


MTRF1 (Human) Recombinant Protein (Q01)

Catalog # H00009617-Q01

Size 25 ug, 10 ug

Applications



Specification

Product Description	Human MTRF1 partial ORF (NP_004285.2, 1 a.a. - 100 a.a.) recombinant protein with GST-tag at N-terminal.
Sequence	MNRHLCVWLFRRHPSLNGYLQCHIQLHSHQFRQIHLDTRLQVFRQNRNCILHLLSKNWSRRYCHQD TKMLWKHKALQKYMENLSKEYQTLEQCLQHIPvNE
Host	Wheat Germ (in vitro)
Theoretical MW (kDa)	36.74
Interspecies Antigen Sequence	Mouse (66); Rat (65)
Preparation Method	in vitro wheat germ expression system
Purification	Glutathione Sepharose 4 Fast Flow
Quality Control Testing	12.5% SDS-PAGE Stained with Coomassie Blue.
Storage Buffer	50 mM Tris-HCl, 10 mM reduced Glutathione, pH=8.0 in the elution buffer.
Storage Instruction	Store at -80°C. Aliquot to avoid repeated freezing and thawing.
Note	Best use within three months from the date of receipt of this protein.

Applications

- Enzyme-linked Immunoabsorbent Assay
- Western Blot (Recombinant protein)
- Antibody Production
- Protein Array

Gene Info — MTRF1

Entrez GeneID [9617](#)

GeneBank Accession# [NM_004294](#)

Protein Accession# [NP_004285.2](#)

Gene Name MTRF1

Gene Alias MGC47721, MRF1, MTTRF1, RF1

Gene Description mitochondrial translational release factor 1

Omim ID [604601](#)

Gene Ontology [Hyperlink](#)

Gene Summary The protein encoded by this gene was determined by in silico methods to be a mitochondrial protein with similarity to the peptide chain release factors (RFs) discovered in bacteria and yeast. The peptide chain release factors direct the termination of translation in response to the peptide chain termination codons. Initially thought to have a role in the termination of mitochondria protein synthesis, a recent publication found no mitochondrial translation release functionality. Multiple alternatively spliced transcript variants have been suggested by mRNA and EST data; however, their full-length natures are not clear. [provided by RefSeq]

Other Designations OTTHUMP00000018315|OTTHUMP00000018316|mitochondrial peptide chain release factor 1