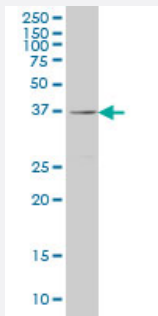


RAB36 monoclonal antibody (M01), clone 6A6

Catalog # H00009609-M01

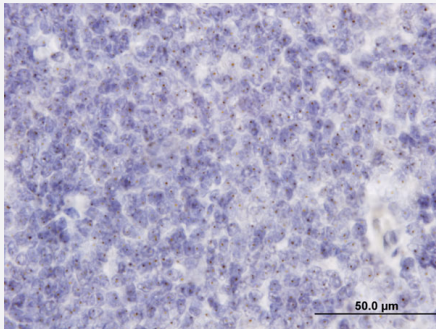
Size 50 ug

Applications



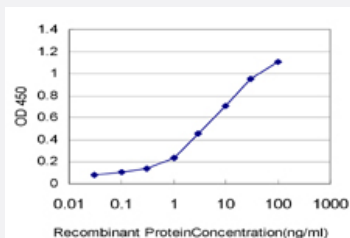
Western Blot (Cell lysate)

RAB36 monoclonal antibody (M01), clone 6A6 Western Blot analysis of RAB36 expression in A-431 (Cat # L015V1).



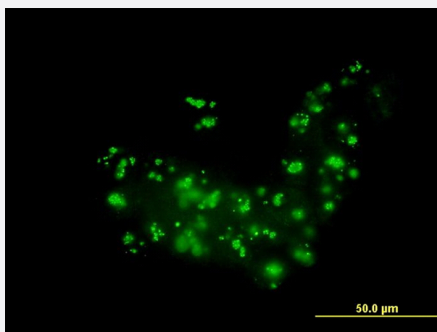
Immunohistochemistry (Formalin/PFA-fixed paraffin-embedded sections)

Immunoperoxidase of monoclonal antibody to RAB36 on formalin-fixed paraffin-embedded human tonsil. [antibody concentration 1.5 ug/ml]



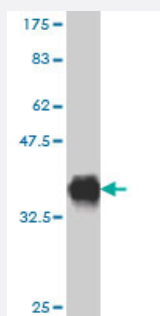
Sandwich ELISA (Recombinant protein)

Detection limit for recombinant GST tagged RAB36 is approximately 0.1ng/ml as a capture antibody.



Immunofluorescence

Immunofluorescence of monoclonal antibody to RAB36 on A-431 cell. [antibody concentration 10 ug/ml]



Western Blot detection against Immunogen (36.74 KDa) .

Specification

Product Description	Mouse monoclonal antibody raised against a partial recombinant RAB36.
Immunogen	RAB36 (NP_004905, 234 a.a. ~ 333 a.a) partial recombinant protein with GST tag. MW of the GST tag alone is 26 KDa.
Sequence	LVGTKKDLLSGAACEQAEADAVHLAREMQAEYWSVSAKTGENVKAFFSRVAALAFEQSVLQDLERQSSARLQVGNGLIQMEGSPPETQESKRPSLGGC
Host	Mouse
Reactivity	Human
Interspecies Antigen Sequence	Rat (86)
Isotype	IgG2a Kappa
Quality Control Testing	Antibody Reactive Against Recombinant Protein. Western Blot detection against Immunogen (36.74 KDa) .
Storage Buffer	In 1x PBS, pH 7.4
Storage Instruction	Store at -20°C or lower. Aliquot to avoid repeated freezing and thawing.

Applications

- Western Blot (Cell lysate)

RAB36 monoclonal antibody (M01), clone 6A6 Western Blot analysis of RAB36 expression in A-431 (Cat # L015V1).

[Protocol Download](#)

- Western Blot (Recombinant protein)

[Protocol Download](#)

- Immunohistochemistry (Formalin/PFA-fixed paraffin-embedded sections)

Immunoperoxidase of monoclonal antibody to RAB36 on formalin-fixed paraffin-embedded human tonsil. [antibody concentration 1.5 ug/ml]

[Protocol Download](#)

- Sandwich ELISA (Recombinant protein)

Detection limit for recombinant GST tagged RAB36 is approximately 0.1ng/ml as a capture antibody.

[Protocol Download](#)

- ELISA

- Immunofluorescence

Immunofluorescence of monoclonal antibody to RAB36 on A-431 cell. [antibody concentration 10 ug/ml]

Gene Info — RAB36

Entrez GeneID	9609
---------------	----------------------

GeneBank Accession#	NM_004914
---------------------	---------------------------

Protein Accession#	NP_004905
--------------------	---------------------------

Gene Name	RAB36
-----------	-------

Gene Alias	-
------------	---

Gene Description	RAB36, member RAS oncogene family
------------------	-----------------------------------

Omim ID	605662
---------	------------------------

Gene Ontology[Hyperlink](#)**Gene Summary**

O

Other Designations

small GTP-binding protein Rab36