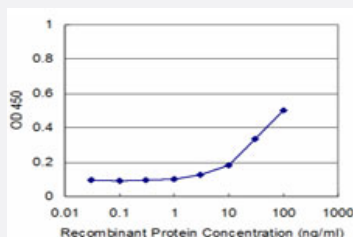


# AKAP12 monoclonal antibody (M02), clone 3C3

Catalog # H00009590-M02

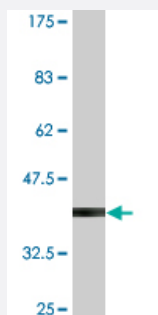
Size 100 ug

## Applications



### Sandwich ELISA (Recombinant protein)

Detection limit for recombinant GST tagged AKAP12 is approximately 3ng/ml as a capture antibody.



Western Blot detection against Immunogen (37.62 KDa) .

## Specification

<b>Product Description</b>	Mouse monoclonal antibody raised against a partial recombinant AKAP12.
<b>Immunogen</b>	AKAP12 (NP_005091, 1675 a.a. ~ 1782 a.a) partial recombinant protein with GST tag. MW of the GST tag alone is 26 KDa.
<b>Sequence</b>	VPEDDGHALLAERIEKSLVEPKEDKEGDDVDDPENQNSALADTDASGGLTKESPDTNGPKQKE KEDAQEVELQEGKVHSESDKAITPQAQEELQKQERESAKSELTES
<b>Host</b>	Mouse
<b>Reactivity</b>	Human

Interspecies Antigen Sequence	Mouse (56); Rat (56)
Isotype	IgG2b Kappa
Quality Control Testing	Antibody Reactive Against Recombinant Protein. Western Blot detection against Immunogen (37.62 KDa) .
Storage Buffer	In 1x PBS, pH 7.4
Storage Instruction	Store at -20°C or lower. Aliquot to avoid repeated freezing and thawing.

## Applications

- Western Blot (Recombinant protein)

[Protocol Download](#)

- Sandwich ELISA (Recombinant protein)

Detection limit for recombinant GST tagged AKAP12 is approximately 3ng/ml as a capture antibody.

[Protocol Download](#)

- ELISA

## Gene Info — AKAP12

Entrez GeneID	<a href="#">9590</a>
GeneBank Accession#	<a href="#">NM_005100</a>
Protein Accession#	<a href="#">NP_005091</a>
Gene Name	AKAP12
Gene Alias	AKAP250, DKFZp686M0430, DKFZp686O0331, FLJ20945, FLJ97621
Gene Description	A kinase (PRKA) anchor protein 12
Omim ID	<a href="#">604698</a>
Gene Ontology	<a href="#">Hyperlink</a>

**Gene Summary**

The A-kinase anchor proteins (AKAPs) are a group of structurally diverse proteins, which have the common function of binding to the regulatory subunit of protein kinase A (PKA) and confining the holoenzyme to discrete locations within the cell. This gene encodes a member of the AKAP family. The encoded protein is expressed in endothelial cells, cultured fibroblasts, and osteosarcoma cells. It associates with protein kinases A and C and phosphatase, and serves as a scaffold protein in signal transduction. This protein and RII PKA colocalize at the cell periphery. This protein is a cell growth-related protein. Antibodies to this protein can be produced by patients with myasthenia gravis. Alternative splicing of this gene results in two transcript variants encoding different isoforms. [provided by RefSeq]

**Other Designations**

A kinase (PRKA) anchor protein (gravin) 12|A-kinase anchor protein, 250kDa|OTTHUMP00000017426|kinase scaffold protein gravin|myasthenia gravis autoantigen gravin

**Disease**

- [Cerebral Hemorrhage](#)
- [Chronic Disease](#)
- [Genetic Predisposition to Disease](#)
- [Hypertension](#)
- [Intracranial Hemorrhages](#)
- [Kidney Diseases](#)
- [Stroke](#)
- [Subarachnoid Hemorrhage](#)