

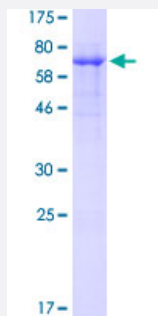
Full-Length

WTAP (Human) Recombinant Protein (P01)

Catalog # H00009589-P01

Size 25 ug, 10 ug

Applications



Specification

Product Description

Human WTAP full-length ORF (NP_004897.2, 1 a.a. - 396 a.a.) recombinant protein with GST-tag at N-terminal.

Sequence

MTNEEPLPKKVR LSETDFKVMARDELILRWKQYEAYVQALEGKYTDLNSNDVTGLRESEEKLKQ
 QQQESARRENILVMRLATKEQEMQECTTQIQYLKQVQQPSVAQLRSTMVDPAINLFFLKMKGELE
 QTKDKLEQAQNELSAWKFTPDSQTGKKLMAKCRMLIQENQELGRQLSQGRIAQLEAELALQKKY
 SEELKSSQDELNDFIQLDEEVEGMMQSTILVLQQQLKETRQQLAQYQQQQSQASAPSTSRTTASE
 PVEQSEATSKDCSRLTNGPSNGSSSRQRTSGSGFHREGNTTEDDFPSSPGNGNKSSNSSEERT
 GRGGSGYVNQLSAGYESVDSPTGSENSLTHQSNDDSSHDPQEEKAVSGKGNRTVGSRHVQN
 GLDSSVNVQGSVL

Host

Wheat Germ (in vitro)

Theoretical MW (kDa)

70.6

Interspecies Antigen Sequence

Mouse (96); Rat (96)

Preparation Method

[in vitro wheat germ expression system](#)

Purification

Glutathione Sepharose 4 Fast Flow

Quality Control Testing

12.5% SDS-PAGE Stained with Coomassie Blue.

Storage Buffer	50 mM Tris-HCl, 10 mM reduced Glutathione, pH=8.0 in the elution buffer.
Storage Instruction	Store at -80°C. Aliquot to avoid repeated freezing and thawing.
Note	Best use within three months from the date of receipt of this protein.

Applications

- Enzyme-linked Immunoabsorbent Assay
- Western Blot (Recombinant protein)
- Antibody Production
- Protein Array

Gene Info — WTAP

Entrez GeneID	9589
GeneBank Accession#	NM_004906.3
Protein Accession#	NP_004897.2
Gene Name	WTAP
Gene Alias	DKFZp686F20131, KIAA0105, MGC3925
Gene Description	Wilms tumor 1 associated protein
Omim ID	605442
Gene Ontology	Hyperlink
Gene Summary	The Wilms tumor suppressor gene WT1 appears to play a role in both transcriptional and posttranscriptional regulation of certain cellular genes. This gene encodes a WT1-associating protein, which is a ubiquitously expressed nuclear protein. Like WT1 protein, this protein is localized throughout the nucleoplasm as well as in speckles and partially colocalizes with splicing factors. Alternative splicing of this gene results in three transcript variants, two of which encode the same isoform. [provided by RefSeq]
Other Designations	OTTHUMP00000017522 OTTHUMP00000017523 PNAS-132 WT1-associated protein Wilms' tumour 1-associating protein putative pre-mRNA splicing regulator female-lethal(2D)