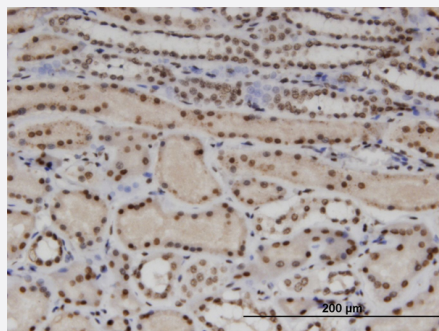


WTAP monoclonal antibody (M01), clone 1B11

Catalog # H00009589-M01

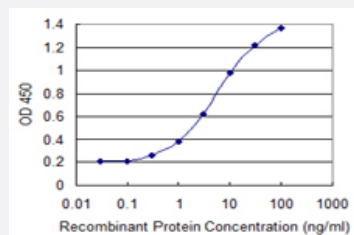
Size 100 ug

Applications



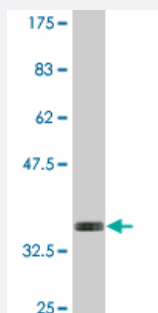
Immunohistochemistry (Formalin/PFA-fixed paraffin-embedded sections)

Immunoperoxidase of monoclonal antibody to WTAP on formalin-fixed paraffin-embedded human kidney. [antibody concentration 3 ug/ml]



Sandwich ELISA (Recombinant protein)

Detection limit for recombinant GST tagged WTAP is 0.1 ng/ml as a capture antibody.



Western Blot detection against Immunogen (34.76 KDa) .

Specification

Product Description

Mouse monoclonal antibody raised against a partial recombinant WTAP.

Immunogen	WTAP (NP_690596.1, 70 a.a. ~ 151 a.a) partial recombinant protein with GST tag. MW of the GST tag alone is 26 KDa.
Sequence	ARRENILVMRLATKEQEMQECTTQIQYLKQVQQPSVAQLRSTMVDPAINLFFLKMKGELEQTKDK LEQAQNELSAWKFTPDR
Host	Mouse
Reactivity	Human
Interspecies Antigen Sequence	Mouse (96); Rat (96)
Isotype	IgG2a Kappa
Quality Control Testing	Antibody Reactive Against Recombinant Protein. Western Blot detection against Immunogen (34.76 KDa) .
Storage Buffer	In 1x PBS, pH 7.4
Storage Instruction	Store at -20°C or lower. Aliquot to avoid repeated freezing and thawing.

Applications

- Western Blot (Recombinant protein)

[Protocol Download](#)

- Immunohistochemistry (Formalin/PFA-fixed paraffin-embedded sections)

Immunoperoxidase of monoclonal antibody to WTAP on formalin-fixed paraffin-embedded human kidney. [antibody concentration 3 ug/ml]

[Protocol Download](#)

- Sandwich ELISA (Recombinant protein)

Detection limit for recombinant GST tagged WTAP is 0.1 ng/ml as a capture antibody.

[Protocol Download](#)

- ELISA

Gene Info — WTAP

Entrez GeneID

[9589](#)

GeneBank Accession#	NM_152857
Protein Accession#	NP_690596.1
Gene Name	WTAP
Gene Alias	DKFZp686F20131, KIAA0105, MGC3925
Gene Description	Wilms tumor 1 associated protein
Omim ID	605442
Gene Ontology	Hyperlink
Gene Summary	<p>The Wilms tumor suppressor gene WT1 appears to play a role in both transcriptional and posttranscriptional regulation of certain cellular genes. This gene encodes a WT1-associating protein, which is a ubiquitously expressed nuclear protein. Like WT1 protein, this protein is localized throughout the nucleoplasm as well as in speckles and partially colocalizes with splicing factors. Alternative splicing of this gene results in three transcript variants, two of which encode the same isoform. [provided by RefSeq]</p>
Other Designations	OTTHUMP00000017522 OTTHUMP00000017523 PNAS-132 WT1-associated protein Wilms' tumour 1-associating protein putative pre-mRNA splicing regulator female-lethal(2D)