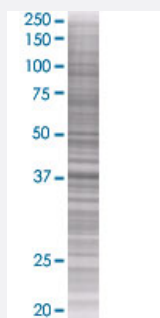


MAD2L1BP 293T Cell Transient Overexpression Lysate(Denatured)

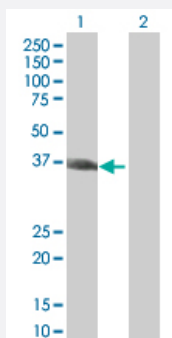
Catalog # H00009587-T02 Size 100 uL

Applications



SDS-PAGE Gel

MAD2L1BP transfected lysate.



Western Blot

Lane 1: MAD2L1BP transfected lysate (33.77 KDa)

Lane 2: Non-transfected lysate.

Specification

| | |
|-------------------------------|---------------------------|
| Transfected Cell Line | 293T |
| Plasmid | pCMV-MAD2L1BP full-length |
| Host | Human |
| Theoretical MW (kDa) | 33.77 |
| Interspecies Antigen Sequence | Mouse (76); Rat (79) |

Quality Control Testing

Transient overexpression cell lysate was tested with Anti-MAD2L1BP antibody ([H00009587-B02](#)) by Western Blots.
SDS-PAGE Gel
MAD2L1BP transfected lysate.
Western Blot
Lane 1: MAD2L1BP transfected lysate (33.77 KDa)
Lane 2: Non-transfected lysate.

Storage Buffer

1X Sample Buffer (50 mM Tris-HCl, 2% SDS, 10% glycerol, 300 mM 2-mercaptoethanol, 0.01% Bromophenol blue)

Storage Instruction

Store at -80°C. Aliquot to avoid repeated freezing and thawing.

Applications

- Western Blot

Gene Info — MAD2L1BP

Entrez GeneID

[9587](#)

GeneBank Accession#

[NM_001003690](#)

Protein Accession#

[NP_001003690](#)

Gene Name

MAD2L1BP

Gene Alias

CMT2, KIAA0110, MGC11282, RP1-261G23.6

Gene Description

MAD2L1 binding protein

Gene Ontology

[Hyperlink](#)

Gene Summary

The protein encoded by this gene was identified as a binding protein of the MAD2 mitotic arrest deficient-like 1 (MAD2/MAD2L1). MAD2 is a key component of the spindle checkpoint that delays the onset of anaphase until all the kinetochores are attached to the spindle. This protein may interact with the spindle checkpoint and coordinate cell cycle events in late mitosis. Alternatively spliced transcript variants encoding distinct isoforms have been observed. [provided by RefSeq]

Other Designations

OTTHUMP00000016496|caught by MAD2 protein