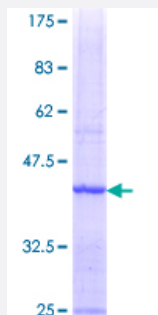


MAD2L1BP (Human) Recombinant Protein (Q01)

Catalog # H00009587-Q01

Size 25 ug, 10 ug

Applications



Specification

Product Description	Human MAD2L1BP partial ORF (NP_055443.1, 171 a.a. - 274 a.a.) recombinant protein with GST-tag at N-terminal.
Sequence	LLAPYSVDQSLSTAACLRLRFRAIFMADAFSELQAPPLMGTVVMAQGHRNCGEDWFRPKLNRYV PSRGHKLTVTLSCGRPSIRTTAWEDYWFQAPVTFKGFRE
Host	Wheat Germ (in vitro)
Theoretical MW (kDa)	37.18
Interspecies Antigen Sequence	Mouse (76); Rat (79)
Preparation Method	in vitro wheat germ expression system
Purification	Glutathione Sepharose 4 Fast Flow
Quality Control Testing	12.5% SDS-PAGE Stained with Coomassie Blue.
Storage Buffer	50 mM Tris-HCl, 10 mM reduced Glutathione, pH=8.0 in the elution buffer.
Storage Instruction	Store at -80°C. Aliquot to avoid repeated freezing and thawing.
Note	Best use within three months from the date of receipt of this protein.

Applications

- Enzyme-linked Immunoabsorbent Assay
- Western Blot (Recombinant protein)
- Antibody Production
- Protein Array

Gene Info — MAD2L1BP

Entrez GeneID [9587](#)

GeneBank Accession# [NM_014628](#)

Protein Accession# [NP_055443.1](#)

Gene Name MAD2L1BP

Gene Alias CMT2, KIAA0110, MGC11282, RP1-261G23.6

Gene Description MAD2L1 binding protein

Gene Ontology [Hyperlink](#)

Gene Summary The protein encoded by this gene was identified as a binding protein of the MAD2 mitotic arrest deficient-like 1 (MAD2/MAD2L1). MAD2 is a key component of the spindle checkpoint that delays the onset of anaphase until all the kinetochores are attached to the spindle. This protein may interact with the spindle checkpoint and coordinate cell cycle events in late mitosis. Alternatively spliced transcript variants encoding distinct isoforms have been observed. [provided by RefSeq]

Other Designations OTTHUMP00000016496|caught by MAD2 protein