

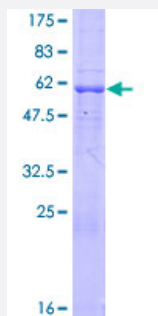
Full-Length

## MAD2L1BP (Human) Recombinant Protein (P02)

Catalog # H00009587-P02

Size 25 ug, 10 ug

### Applications



### Specification

<b>Product Description</b>	Human MAD2L1BP full-length ORF ( NP_001003690.1, 1 a.a. - 306 a.a.) recombinant protein with G ST-tag at N-terminal.
<b>Sequence</b>	MARVPLGRSLTSPRLEHNGMTSAHHNFRLPGSRDSPASASQVAEIIDLEWYEKSEETHASQIELLETSSTQEPLNASEAFCPRDCMVPVFPGPVSEQEGCCQFTCELLKHIMYQRQQLPLPYEQLKHFYRKPSQAEEMLKKKPRATTEVSSRKCQQALAELESVLSHLEDFFARTLVPRVLILLGGNALSPKEFYELDSLAPYSVDQSLSTAACLRRLFRAIFMADAFSELQAPPLMGTVVMAQGHRNCGEDWFRPKLNRYRVPSRGHKLTVTLSGCRPSIRTTAWEDYWFQAPVTFKGFRE
<b>Host</b>	Wheat Germ (in vitro)
<b>Theoretical MW (kDa)</b>	61.1
<b>Interspecies Antigen Sequence</b>	Mouse (76); Rat (79)
<b>Preparation Method</b>	<a href="#">in vitro wheat germ expression system</a>
<b>Purification</b>	Glutathione Sepharose 4 Fast Flow
<b>Quality Control Testing</b>	12.5% SDS-PAGE Stained with Coomassie Blue.
<b>Storage Buffer</b>	50 mM Tris-HCl, 10 mM reduced Glutathione, pH=8.0 in the elution buffer.

**Storage Instruction**

Store at -80°C. Aliquot to avoid repeated freezing and thawing.

**Note**

Best use within three months from the date of receipt of this protein.

## Applications

- Enzyme-linked Immunoabsorbent Assay
- Western Blot (Recombinant protein)
- Antibody Production
- Protein Array

## Gene Info — MAD2L1BP

**Entrez GeneID**[9587](#)**GeneBank Accession#**[NM\\_001003690.1](#)**Protein Accession#**[NP\\_001003690.1](#)**Gene Name**

MAD2L1BP

**Gene Alias**

CMT2, KIAA0110, MGC11282, RP1-261G23.6

**Gene Description**

MAD2L1 binding protein

**Gene Ontology**[Hyperlink](#)**Gene Summary**

The protein encoded by this gene was identified as a binding protein of the MAD2 mitotic arrest deficient-like 1 (MAD2/MAD2L1). MAD2 is a key component of the spindle checkpoint that delays the onset of anaphase until all the kinetochores are attached to the spindle. This protein may interact with the spindle checkpoint and coordinate cell cycle events in late mitosis. Alternatively spliced transcript variants encoding distinct isoforms have been observed. [provided by RefSeq]

**Other Designations**

OTTHUMP00000016496|caught by MAD2 protein