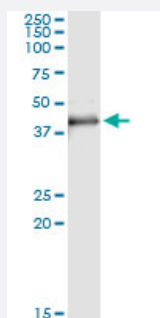


# MAD2L1BP monoclonal antibody (M13), clone 4B9

Catalog # H00009587-M13

Size 100 ug

## Applications



### Immunoprecipitation

Immunoprecipitation of MAD2L1BP transfected lysate using anti-MAD2L1BP monoclonal antibody and Protein A Magnetic Bead, and immunoblotted with MAD2L1BP MaxPab rabbit polyclonal antibody.

## Specification

<b>Product Description</b>	Mouse monoclonal antibody raised against a partial recombinant MAD2L1BP.
<b>Immunogen</b>	MAD2L1BP (NP_055443.1, 171 a.a. ~ 274 a.a) partial recombinant protein with GST tag. MW of the GST tag alone is 26 KDa.
<b>Sequence</b>	LLAPYSVDQSLSTAACLRRLLFRAIFMADAFSELQAPPLMGTVVMAQGHRNCGEDWFRPKLNRYV PSRGHKLTVTLSGGRPSIRTTAWEDYWFQAPVTFKGFRE
<b>Host</b>	Mouse
<b>Reactivity</b>	Human
<b>Interspecies Antigen Sequence</b>	Mouse (76); Rat (79)
<b>Isotype</b>	IgG2a Kappa
<b>Quality Control Testing</b>	Antibody Reactive Against Recombinant Protein.
<b>Storage Buffer</b>	In 1x PBS, pH 7.4
<b>Storage Instruction</b>	Store at -20°C or lower. Aliquot to avoid repeated freezing and thawing.

## Applications

- Immunoprecipitation

Immunoprecipitation of MAD2L1BP transfected lysate using anti-MAD2L1BP monoclonal antibody and Protein A Magnetic Bead, and immunoblotted with MAD2L1BP MaxPab rabbit polyclonal antibody.

[Protocol Download](#)

- ELISA

## Gene Info — MAD2L1BP

Entrez GeneID	<a href="#">9587</a>
---------------	----------------------

GeneBank Accession#	<a href="#">NM_014628</a>
---------------------	---------------------------

Protein Accession#	<a href="#">NP_055443.1</a>
--------------------	-----------------------------

Gene Name	MAD2L1BP
-----------	----------

Gene Alias	CMT2, KIAA0110, MGC11282, RP1-261G23.6
------------	--

Gene Description	MAD2L1 binding protein
------------------	------------------------

Gene Ontology	<a href="#">Hyperlink</a>
---------------	---------------------------

Gene Summary	The protein encoded by this gene was identified as a binding protein of the MAD2 mitotic arrest deficient-like 1 (MAD2/MAD2L1). MAD2 is a key component of the spindle checkpoint that delays the onset of anaphase until all the kinetochores are attached to the spindle. This protein may interact with the spindle checkpoint and coordinate cell cycle events in late mitosis. Alternatively spliced transcript variants encoding distinct isoforms have been observed. [provided by RefSeq]
--------------	---

Other Designations	OTTHUMP00000016496 caught by MAD2 protein
--------------------	---