

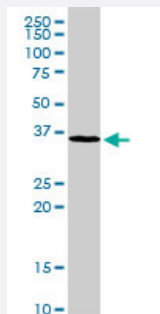
MaxPab®

MAD2L1BP MaxPab rabbit polyclonal antibody (D01)

Catalog # H00009587-D01

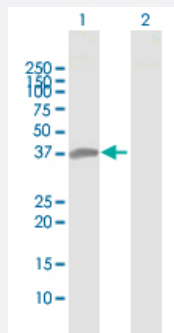
Size 100 uL

Applications



Western Blot (Tissue lysate)

MAD2L1BP MaxPab rabbit polyclonal antibody. Western Blot analysis of MAD2L1BP expression in mouse liver.

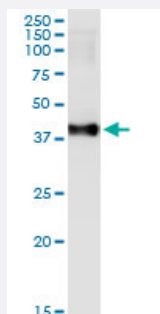


Western Blot (Transfected lysate)

Western Blot analysis of MAD2L1BP expression in transfected 293T cell line ([H00009587-T02](#)) by MAD2L1BP MaxPab polyclonal antibody.

Lane 1: MAD2L1BP transfected lysate(34.70 KDa).

Lane 2: Non-transfected lysate.



Immunoprecipitation

Immunoprecipitation of MAD2L1BP transfected lysate using anti-MAD2L1BP MaxPab rabbit polyclonal antibody and Protein A Magnetic Bead, and immunoblotted with MAD2L1BP purified MaxPab mouse polyclonal antibody (B02P) ([H00009587-B02P](#)).

Specification

Product Description

Rabbit polyclonal antibody raised against a full-length human MAD2L1BP protein.

Immunogen	MAD2L1BP (NP_001003690.1, 1 a.a. ~ 306 a.a) full-length human protein.
Sequence	MARVPLGRSLTSPRLEHNGMTSAHHNFRLPGSRDSPASASQVAEIIDLEWYEKSEETHASQIELL ETSSTQEPLNASEAFCPRDCMVPVVFPGPVSQEGCCQFTCELLKHIMYQRQQQLPYPYQLKHFY RKPSQAEEMLKKKPRATTEVSSRKCQQALAELESVLSHLEDFFARTLVPRVLILLGGNALSPKE FYELDLSLLAPYSVDQSLSTAACLRRRLFRAIFMADAFSELQAPPLMGTVVMAQGHRNCGEDWFR PKLNYRVPSRGHKLTVTLSCGRPSIRTAWEDYWFQAPVTFKGFRE
Host	Rabbit
Reactivity	Human, Mouse
Interspecies Antigen Sequence	Mouse (76); Rat (79)
Quality Control Testing	Antibody reactive against mammalian transfected lysate.
Storage Buffer	No additive
Storage Instruction	Store at -20°C or lower. Aliquot to avoid repeated freezing and thawing.

Applications

- Western Blot (Tissue lysate)

MAD2L1BP MaxPab rabbit polyclonal antibody. Western Blot analysis of MAD2L1BP expression in mouse liver.

[Protocol Download](#)

- Western Blot (Transfected lysate)

Western Blot analysis of MAD2L1BP expression in transfected 293T cell line ([H00009587-T02](#)) by MAD2L1BP MaxPab polyclonal antibody.

Lane 1: MAD2L1BP transfected lysate(34.70 KDa).

Lane 2: Non-transfected lysate.

[Protocol Download](#)

- Immunoprecipitation

Immunoprecipitation of MAD2L1BP transfected lysate using anti-MAD2L1BP MaxPab rabbit polyclonal antibody and Protein A Magnetic Bead, and immunoblotted with MAD2L1BP purified MaxPab mouse polyclonal antibody (B02P) ([H00009587-B02P](#)).

[Protocol Download](#)

Gene Info — MAD2L1BP

Entrez GeneID	9587
GeneBank Accession#	NM_001003690
Protein Accession#	NP_001003690.1
Gene Name	MAD2L1BP
Gene Alias	CMT2, KIAA0110, MGC11282, RP1-261G23.6
Gene Description	MAD2L1 binding protein
Gene Ontology	Hyperlink
Gene Summary	<p>The protein encoded by this gene was identified as a binding protein of the MAD2 mitotic arrest d efficient-like 1 (MAD2/MAD2L1). MAD2 is a key component of the spindle checkpoint that delays t he onset of anaphase until all the kinetochores are attached to the spindle. This protein may intera ct with the spindle checkpoint and coordinate cell cycle events in late mitosis. Alternatively spliced transcript variants encoding distinct isoforms have been observed. [provided by RefSeq</p>
Other Designations	OTTHUMP00000016496 caught by MAD2 protein