

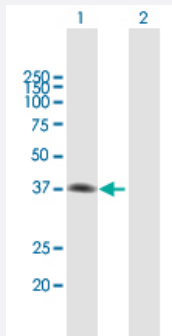
MaxPab®

MAD2L1BP purified MaxPab mouse polyclonal antibody (B02P)

Catalog # H00009587-B02P

Size 50 ug

Applications

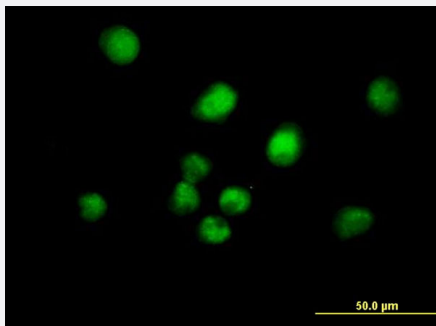


Western Blot (Transfected lysate)

Western Blot analysis of MAD2L1BP expression in transfected 293T cell line ([H00009587-T02](#)) by MAD2L1BP MaxPab polyclonal antibody.

Lane 1: MAD2L1BP transfected lysate(33.66 KDa).

Lane 2: Non-transfected lysate.



Immunofluorescence

Immunofluorescence of purified MaxPab antibody to MAD2L1BP on HeLa cell. [antibody concentration 10 ug/ml]

Specification

Product Description	Mouse polyclonal antibody raised against a full-length human MAD2L1BP protein.
Immunogen	MAD2L1BP (NP_001003690, 1 a.a. ~ 306 a.a) full-length human protein.
Sequence	MARVPLGRSLTSPRLEHNGMTSAHHNFRLPGSRDSPASASQVAEIIDLEWYEKSEETHASQIELL ETSSTQEPLNASEAFCPRDCMVPVFPGPVSEQGCCQFTCELLKHIMYQRQQLPLPYEQLKHFY RKPSQAEEMLKKKPRATTEVSSRKCQQALAELESVLSHLEDFFARTLVPRVLILLGGNALSPKE FYELDLSLLAPYSVDQSLSTAACLRRLLFRAIFMADAFSELQAPPLMGTVVMAQGHRNCGEDWFR PKLNYRVPSRGHKLTVTLSCGRPSIRTTAWEDYWFQAPVTFKGFRE
Host	Mouse

Reactivity	Human
Interspecies Antigen Sequence	Mouse (76); Rat (79)
Quality Control Testing	Antibody reactive against mammalian transfected lysate.
Storage Buffer	In 1x PBS, pH 7.4
Storage Instruction	Store at -20°C or lower. Aliquot to avoid repeated freezing and thawing.

Applications

- Western Blot (Transfected lysate)

Western Blot analysis of MAD2L1BP expression in transfected 293T cell line ([H00009587-T02](#)) by MAD2L1BP MaxPab polyclonal antibody.

Lane 1: MAD2L1BP transfected lysate(33.66 KDa).

Lane 2: Non-transfected lysate.

[Protocol Download](#)

- Immunofluorescence

Immunofluorescence of purified MaxPab antibody to MAD2L1BP on HeLa cell. [antibody concentration 10 ug/ml]

Gene Info — MAD2L1BP

Entrez GeneID	9587
GeneBank Accession#	NM_001003690
Protein Accession#	NP_001003690
Gene Name	MAD2L1BP
Gene Alias	CMT2, KIAA0110, MGC11282, RP1-261G23.6
Gene Description	MAD2L1 binding protein
Gene Ontology	Hyperlink
Gene Summary	The protein encoded by this gene was identified as a binding protein of the MAD2 mitotic arrest efficient-like 1 (MAD2/MAD2L1). MAD2 is a key component of the spindle checkpoint that delays the onset of anaphase until all the kinetochores are attached to the spindle. This protein may interact with the spindle checkpoint and coordinate cell cycle events in late mitosis. Alternatively spliced transcript variants encoding distinct isoforms have been observed. [provided by RefSeq]

Other DesignationsOTTHUMP00000016496|caught by MAD2 protein
