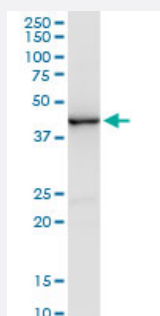


# CREB5 monoclonal antibody (M01), clone 1E2

Catalog # H00009586-M01

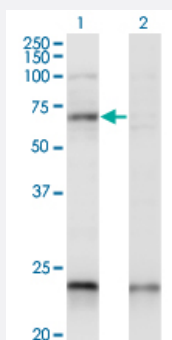
Size 50 ug

## Applications



### Western Blot (Tissue lysate)

CREB5 monoclonal antibody (M01), clone 1E2. Western Blot analysis of CREB5 expression in human kidney.

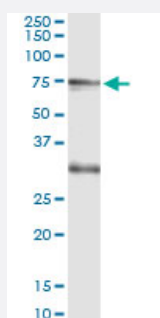


### Western Blot (Transfected lysate)

Western Blot analysis of CREB5 expression in transfected 293T cell line by CREB5 monoclonal antibody (M01), clone 1E2.

Lane 1: CREB5 transfected lysate (Predicted MW: 56.9 KDa).

Lane 2: Non-transfected lysate.

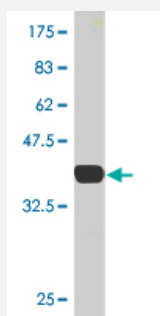
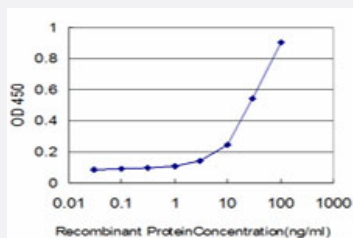


### Immunoprecipitation

Immunoprecipitation of CREB5 transfected lysate using anti-CREB5 monoclonal antibody and Protein A Magnetic Bead, and immunoblotted with CREB5 MaxPab rabbit polyclonal antibody.

## Sandwich ELISA (Recombinant protein)

Detection limit for recombinant GST tagged CREB5 is approximately 3ng/ml as a capture antibody.



Western Blot detection against Immunogen (36.63 KDa) .

## Specification

<b>Product Description</b>	Mouse monoclonal antibody raised against a partial recombinant CREB5.
<b>Immunogen</b>	CREB5 (NP_001011666, 1 a.a. ~ 99 a.a) partial recombinant protein with GST tag. MW of the GST tag alone is 26 KDa.
<b>Sequence</b>	MFCTSGGNSASVMSMRPVPGLSLLHLHNRQRQMPASMPGTLNPTMPGSSAVLMPMERQ MSVNSSIMGMQGPNLSPNCASPQVQPMHSEAKMRLKA
<b>Host</b>	Mouse
<b>Reactivity</b>	Human
<b>Interspecies Antigen Sequence</b>	Mouse (98); Rat (97)
<b>Isotype</b>	IgG2a Kappa
<b>Quality Control Testing</b>	Antibody Reactive Against Recombinant Protein. Western Blot detection against Immunogen (36.63 KDa) .
<b>Storage Buffer</b>	In 1x PBS, pH 7.4
<b>Storage Instruction</b>	Store at -20°C or lower. Aliquot to avoid repeated freezing and thawing.

## Applications

- Western Blot (Tissue lysate)

CREB5 monoclonal antibody (M01), clone 1E2. Western Blot analysis of CREB5 expression in human kidney.

[Protocol Download](#)

- Western Blot (Transfected lysate)

Western Blot analysis of CREB5 expression in transfected 293T cell line by CREB5 monoclonal antibody (M01), clone 1E2.

Lane 1: CREB5 transfected lysate (Predicted MW: 56.9 KDa).

Lane 2: Non-transfected lysate.

[Protocol Download](#)

- Western Blot (Recombinant protein)

[Protocol Download](#)

- Immunoprecipitation

Immunoprecipitation of CREB5 transfected lysate using anti-CREB5 monoclonal antibody and Protein A Magnetic Bead, and immunoblotted with CREB5 MaxPab rabbit polyclonal antibody.

[Protocol Download](#)

- Sandwich ELISA (Recombinant protein)

Detection limit for recombinant GST tagged CREB5 is approximately 3ng/ml as a capture antibody.

[Protocol Download](#)

- ELISA

## Gene Info — CREB5

Entrez GeneID	<a href="#">9586</a>
---------------	----------------------

GeneBank Accession#	<a href="#">NM_001011666</a>
---------------------	------------------------------

Protein Accession#	<a href="#">NP_001011666</a>
--------------------	------------------------------

Gene Name	CREB5
-----------	-------

Gene Alias	CRE-BPA
------------	---------

Gene Description	cAMP responsive element binding protein 5
Gene Ontology	<a href="#">Hyperlink</a>
Gene Summary	The product of this gene belongs to the CRE (cAMP response element)-binding protein family. Members of this family contain zinc-finger and bZIP DNA-binding domains. The encoded protein specifically binds to CRE as a homodimer or a heterodimer with c-Jun or CRE-BP1, and functions as a CRE-dependent trans-activator. Alternatively spliced transcript variants encoding different isoforms have been identified. [provided by RefSeq]
Other Designations	H_GS165L15.1 OTTHUMP00000122602 cAMP response element binding protein CRE-Bpa cAMP response element-binding protein CRE-BPa cAMP responsive element binding protein 5 isoform alpha

## Pathway

- [Prostate cancer](#)

## Disease

- [Asthma](#)
- [Celiac Disease](#)
- [Genetic Predisposition to Disease](#)
- [Neoplasm Invasiveness](#)
- [Prostatic Neoplasms](#)
- [Tobacco Use Disorder](#)