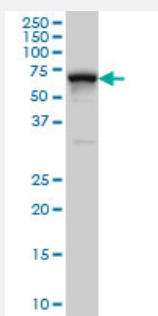


# RNPC2 monoclonal antibody (M01), clone 4G8

Catalog # H00009584-M01

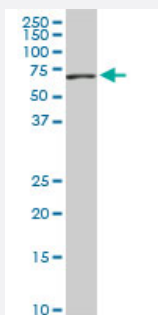
Size 100 ug

## Applications



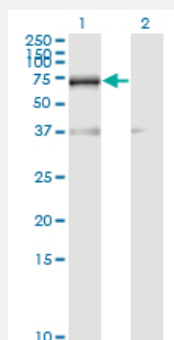
### Western Blot (Cell lysate)

RNPC2 monoclonal antibody (M01), clone 4G8 Western Blot analysis of RNPC2 expression in HeLa S3 NE ( Cat # L013V3 ).



### Western Blot (Cell lysate)

RNPC2 monoclonal antibody (M01), clone 4G8. Western Blot analysis of RNPC2 expression in NIH/3T3 ( Cat # L018V1 ).

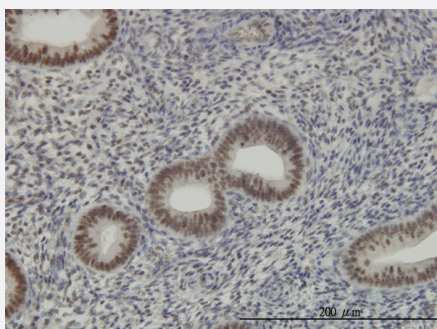


### Western Blot (Transfected lysate)

Western Blot analysis of RBM39 expression in transfected 293T cell line by RNPC2 monoclonal antibody (M01), clone 4G8.

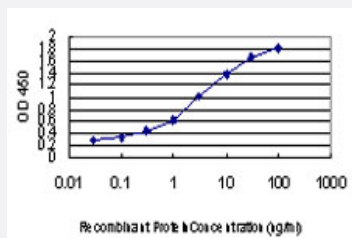
Lane 1: RBM39 transfected lysate(58.7 KDa).

Lane 2: Non-transfected lysate.



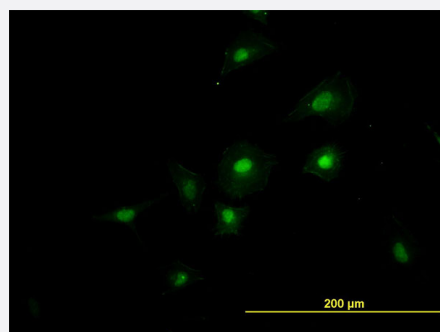
### Immunohistochemistry (Formalin/PFA-fixed paraffin-embedded sections)

Immunoperoxidase of monoclonal antibody to RNPC2 on formalin-fixed paraffin-embedded human endometrium. [antibody concentration 1 ug/ml]



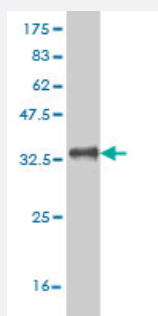
## Sandwich ELISA (Recombinant protein)

Detection limit for recombinant GST tagged RNPC2 is approximately 0.03ng/ml as a capture antibody.



## Immunofluorescence

Immunofluorescence of monoclonal antibody to RNPC2 on HeLa cell. [antibody concentration 40 ug/ml]



Western Blot detection against Immunogen (31.24 KDa) .

## Specification

Product Description	Mouse monoclonal antibody raised against a partial recombinant RNPC2.
Immunogen	RNPC2 (NP_909122, 423 a.a. ~ 472 a.a) partial recombinant protein with GST tag. MW of the GST tag alone is 26 KDa.
Sequence	TQCFQLSNMFNPQTEEEVGWDTEIKDDVIEECNKHGGVVIHYVDKNSAQQG
Host	Mouse
Reactivity	Human, Mouse
Interspecies Antigen Sequence	Mouse (98); Rat (98)
Isotype	IgG2a Kappa

**Quality Control Testing**

Antibody Reactive Against Recombinant Protein.  
Western Blot detection against Immunogen (31.24 KDa) .

**Storage Buffer**

In 1x PBS, pH 7.4

**Storage Instruction**

Store at -20°C or lower. Aliquot to avoid repeated freezing and thawing.

## Applications

- Western Blot (Cell lysate)

RNPC2 monoclonal antibody (M01), clone 4G8 Western Blot analysis of RNPC2 expression in Hela S3 NE ( Cat # L013V3 ).

[Protocol Download](#)

- Western Blot (Cell lysate)

RNPC2 monoclonal antibody (M01), clone 4G8. Western Blot analysis of RNPC2 expression in NIH/3T3 ( Cat # L018V1 ).

[Protocol Download](#)

- Western Blot (Transfected lysate)

Western Blot analysis of RBM39 expression in transfected 293T cell line by RNPC2 monoclonal antibody (M01), clone 4G8.

Lane 1: RBM39 transfected lysate(58.7 KDa).

Lane 2: Non-transfected lysate.

[Protocol Download](#)

- Western Blot (Recombinant protein)

[Protocol Download](#)

- Immunohistochemistry (Formalin/PFA-fixed paraffin-embedded sections)

Immunoperoxidase of monoclonal antibody to RNPC2 on formalin-fixed paraffin-embedded human endometrium. [antibody concentration 1 ug/ml]

[Protocol Download](#)

- Sandwich ELISA (Recombinant protein)

Detection limit for recombinant GST tagged RNPC2 is approximately 0.03ng/ml as a capture antibody.

[Protocol Download](#)

- ELISA

- Immunofluorescence

Immunofluorescence of monoclonal antibody to RNPC2 on HeLa cell. [antibody concentration 40 ug/ml]

## Gene Info — RBM39

Entrez GeneID [9584](#)

GeneBank Accession# [NM\\_184234](#)

Protein Accession# [NP\\_909122](#)

Gene Name RBM39

Gene Alias CAPER, CAPERalpha, CC1.3, DKFZp781C0423, FLJ44170, HCC1, RNPC2, fSAP59

Gene Description RNA binding motif protein 39

Omim ID [604739](#)

Gene Ontology [Hyperlink](#)

**Gene Summary** The protein encoded by this gene is an RNA binding protein and possible splicing factor. The encoded protein is found in the nucleus, where it colocalizes with core spliceosomal proteins. Studies of a mouse protein with high sequence similarity to this protein suggest that this protein may act as a transcriptional coactivator for JUN/AP-1 and estrogen receptors. Multiple transcript variants encoding different isoforms have been observed for this gene. [provided by RefSeq]

**Other Designations** OTTHUMP00000030794|OTTHUMP00000030795|RNA-binding region (RNP1, RRM) containing 2|coactivator of activating protein-1 and estrogen receptors|functional spliceosome-associated protein 59|hepatocellular carcinoma protein 1|splicing factor CC1.3|splicing fac