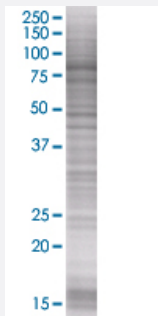


SOX13 293T Cell Transient Overexpression Lysate(Denatured)

Catalog # H00009580-T01

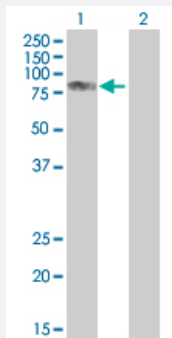
Size 100 uL

Applications



SDS-PAGE Gel

SOX13 transfected lysate



Western Blot

Lane 1: SOX13 transfected lysate (69.2 KDa).

Lane 2: Non-transfected lysate.

Specification

Transfected Cell Line	293T
Plasmid	pCMV-SOX13 full-length
Host	Human
Theoretical MW (kDa)	69.2
Interspecies Antigen Sequence	Mouse (89); Rat (88)

Quality Control Testing

Transient overexpression cell lysate was tested with Anti-SOX13 antibody ([H00009580-B01](#)) by Western Blots.
SDS-PAGE Gel
SOX13 transfected lysate
Western Blot
Lane 1: SOX13 transfected lysate (69.2 KDa).
Lane 2: Non-transfected lysate.

Storage Buffer

1X Sample Buffer (50 mM Tris-HCl, 2% SDS, 10% glycerol, 300 mM 2-mercaptoethanol, 0.01% Bromophenol blue)

Storage Instruction

Store at -80°C. Aliquot to avoid repeated freezing and thawing.

Applications

- Western Blot

Gene Info — SOX13

Entrez GeneID

[9580](#)

GeneBank Accession#

[NM_005686](#)

Protein Accession#

[NP_005677](#)

Gene Name

SOX13

Gene Alias

ICA12, MGC117216, Sox-13

Gene Description

SRY (sex determining region Y)-box 13

Omim ID

[604748](#)

Gene Ontology

[Hyperlink](#)

Gene Summary

This gene encodes a member of the SOX (SRY-related HMG-box) family of transcription factors involved in the regulation of embryonic development and in the determination of cell fate. The encoded protein may act as a transcriptional regulator after forming a protein complex with other proteins. It has also been determined to be a type-1 diabetes autoantigen, also known as islet cell antibody 12. [provided by RefSeq]

Other Designations

SRY-box 13|SRY-related HMG-box gene 13|islet cell antibody 12|type 1 diabetes autoantigen

Disease

- [Genetic Predisposition to Disease](#)
- [Hypertension](#)