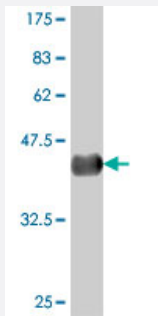


SOX13 polyclonal antibody (A01)

Catalog # H00009580-A01

Size 50 uL

Applications



Western Blot detection against Immunogen (38.65 KDa) .

Specification

Product Description	Mouse polyclonal antibody raised against a partial recombinant SOX13.
Immunogen	SOX13 (NP_005677, 25 a.a. ~ 138 a.a) partial recombinant protein with GST tag.
Sequence	KSEEEKKEPCHEAPQGSATAAEPQPGDPARASQDSADPQAPAQGNFRGSWDCSSPEGNGSPE PKRPGVSEAASGSQEKLDFNRNLKEVVPAIEKLLSSDWKERFLGRNSMEAKDV
Host	Mouse
Reactivity	Human
Interspecies Antigen Sequence	Mouse (89); Rat (88)
Quality Control Testing	Antibody Reactive Against Recombinant Protein. Western Blot detection against Immunogen (38.65 KDa) .
Storage Buffer	50 % glycerol
Storage Instruction	Store at -20°C or lower. Aliquot to avoid repeated freezing and thawing.

Applications

- Western Blot (Recombinant protein)

[Protocol Download](#)

- ELISA

Gene Info — SOX13

Entrez GeneID [9580](#)

GeneBank Accession# [NM_005686](#)

Protein Accession# [NP_005677](#)

Gene Name SOX13

Gene Alias ICA12, MGC117216, Sox-13

Gene Description SRY (sex determining region Y)-box 13

Omim ID [604748](#)

Gene Ontology [Hyperlink](#)

Gene Summary This gene encodes a member of the SOX (SRY-related HMG-box) family of transcription factors involved in the regulation of embryonic development and in the determination of cell fate. The encoded protein may act as a transcriptional regulator after forming a protein complex with other proteins. It has also been determined to be a type-1 diabetes autoantigen, also known as islet cell antibody 12. [provided by RefSeq]

Other Designations SRY-box 13|SRY-related HMG-box gene 13|islet cell antibody 12|type 1 diabetes autoantigen

Disease

- [Genetic Predisposition to Disease](#)
- [Hypertension](#)