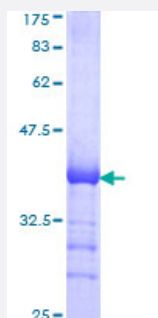


CDC42BPB (Human) Recombinant Protein (Q01)

Catalog # H00009578-Q01

Size 25 ug, 10 ug

Applications



Specification

Product Description	Human CDC42BPB partial ORF (AAD37506, 1580 a.a. - 1679 a.a.) recombinant protein with GST-tag at N-terminal.
Sequence	SKMISNPTNFNHVAHMGPGDGMQVLM DLPLSAVPPSQEERPGPAPTNLARQPPSRNKPYSWPSSGGSEPSVTVPLRSMSPDQDFDKEPDSDSTKHSTP
Host	Wheat Germ (in vitro)
Theoretical MW (kDa)	36.63
Interspecies Antigen Sequence	Mouse (91); Rat (92)
Preparation Method	in vitro wheat germ expression system
Purification	Glutathione Sepharose 4 Fast Flow
Quality Control Testing	12.5% SDS-PAGE Stained with Coomassie Blue.
Storage Buffer	50 mM Tris-HCl, 10 mM reduced Glutathione, pH=8.0 in the elution buffer.
Storage Instruction	Store at -80°C. Aliquot to avoid repeated freezing and thawing.
Note	Best use within three months from the date of receipt of this protein.

Applications

- Enzyme-linked Immunoabsorbent Assay
- Western Blot (Recombinant protein)
- Antibody Production
- Protein Array

Gene Info — CDC42BPB

Entrez GeneID [9578](#)

GeneBank Accession# [AF128625](#)

Protein Accession# [AAD37506](#)

Gene Name CDC42BPB

Gene Alias KIAA1124, MRCKB

Gene Description CDC42 binding protein kinase beta (DMPK-like)

Gene Ontology [Hyperlink](#)

Gene Summary This gene encodes a member of the serine/threonine protein kinase family. The encoded protein contains a Cdc42/Rac-binding p21 binding domain resembling that of PAK kinase. The kinase domain of this protein is most closely related to that of myotonic dystrophy kinase-related ROK. Studies of the similar gene in rat suggested that this kinase may act as a downstream effector of Cdc42 in cytoskeletal reorganization. [provided by RefSeq]

Other Designations CDC42-binding protein kinase beta|CDC42-binding protein kinase beta (DMPK-like)|myotonic dystrophy protein kinase-like beta

Disease

- [Tobacco Use Disorder](#)