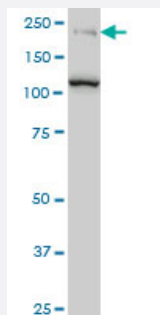


# CDC42BPB monoclonal antibody (M04), clone 2D8

Catalog # H00009578-M04

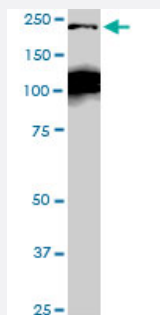
Size 100 ug

## Applications



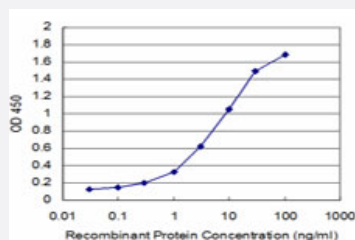
### Western Blot (Cell lysate)

CDC42BPB monoclonal antibody (M04), clone 2D8 Western Blot analysis of CDC42BPB expression in Jurkat ( Cat # L017V1 ).



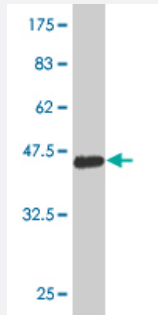
### Western Blot (Cell lysate)

CDC42BPB monoclonal antibody (M04), clone 2D8. Western Blot analysis of CDC42BPB expression in Raw 264.7 (Cat # L024V1 ).



### Sandwich ELISA (Recombinant protein)

Detection limit for recombinant GST tagged CDC42BPB is approximately 0.3ng/ml as a capture antibody.



Western Blot detection against Immunogen (36.63 KDa) .

## Specification

<b>Product Description</b>	Mouse monoclonal antibody raised against a partial recombinant CDC42BPB.
<b>Immunogen</b>	CDC42BPB (AAD37506, 1580 a.a. ~ 1679 a.a) partial recombinant protein with GST tag. MW of the GST tag alone is 26 KDa.
<b>Sequence</b>	SKMISNPTNFNHVAHMGPGDGMQVLMDLPLSAVPPSQEERPGPAPTNLARQPPSRNKPYISWP SSGGSEPSVTVPLRMSDPDQDFDKEPDSDSTKHSTP
<b>Host</b>	Mouse
<b>Reactivity</b>	Human, Mouse
<b>Interspecies Antigen Sequence</b>	Mouse (91); Rat (92)
<b>Isotype</b>	IgG2b Kappa
<b>Quality Control Testing</b>	Antibody Reactive Against Recombinant Protein. Western Blot detection against Immunogen (36.63 KDa) .
<b>Storage Buffer</b>	In 1x PBS, pH 7.4
<b>Storage Instruction</b>	Store at -20°C or lower. Aliquot to avoid repeated freezing and thawing.

## Applications

- Western Blot (Cell lysate)

CDC42BPB monoclonal antibody (M04), clone 2D8 Western Blot analysis of CDC42BPB expression in Jurkat ( Cat # L017V1 ).

[Protocol Download](#)

- Western Blot (Cell lysate)

CDC42BPB monoclonal antibody (M04), clone 2D8. Western Blot analysis of CDC42BPB expression in Raw 264.7(Cat # L024V1 ).

[Protocol Download](#)

- Western Blot (Recombinant protein)

[Protocol Download](#)

- Sandwich ELISA (Recombinant protein)

Detection limit for recombinant GST tagged CDC42BPB is approximately 0.3ng/ml as a capture antibody.

[Protocol Download](#)

- ELISA

## Gene Info — CDC42BPB

Entrez GeneID [9578](#)

GeneBank Accession# [AF128625](#)

Protein Accession# [AAD37506](#)

Gene Name CDC42BPB

Gene Alias KIAA1124, MRCKB

Gene Description CDC42 binding protein kinase beta (DMPK-like)

Gene Ontology [Hyperlink](#)

**Gene Summary** This gene encodes a member of the serine/threonine protein kinase family. The encoded protein contains a Cdc42/Rac-binding p21 binding domain resembling that of PAK kinase. The kinase domain of this protein is most closely related to that of myotonic dystrophy kinase-related ROK. Studies of the similar gene in rat suggested that this kinase may act as a downstream effector of Cdc 42 in cytoskeletal reorganization. [provided by RefSeq]

**Other Designations** CDC42-binding protein kinase beta|CDC42-binding protein kinase beta (DMPK-like)|myotonic dystrophy protein kinase-like beta

## Disease

- [Tobacco Use Disorder](#)