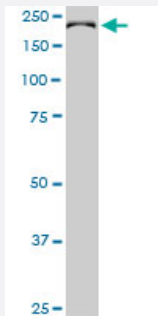


CDC42BPB monoclonal antibody (M03), clone 2F4

Catalog # H00009578-M03

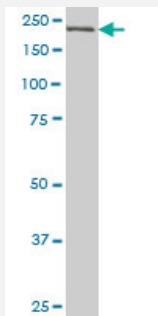
Size 100 ug

Applications



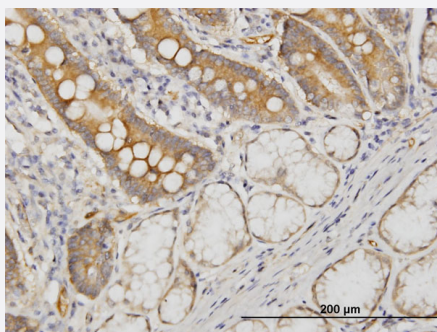
Western Blot (Cell lysate)

CDC42BPB monoclonal antibody (M03), clone 2F4. Western Blot analysis of CDC42BPB expression in PC-12 (Cat # L012V1).



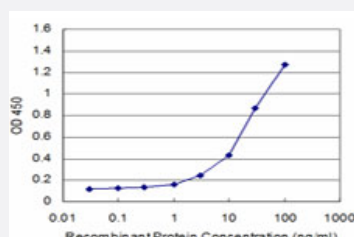
Western Blot (Cell lysate)

CDC42BPB monoclonal antibody (M03), clone 2F4 Western Blot analysis of CDC42BPB expression in A-431 (Cat # L015V1).



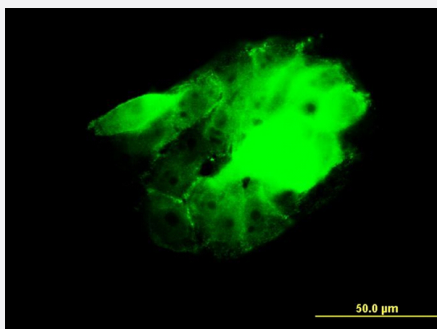
Immunohistochemistry (Formalin/PFA-fixed paraffin-embedded sections)

Immunoperoxidase of monoclonal antibody to CDC42BPB on formalin-fixed paraffin-embedded human small Intestine. [antibody concentration 3 ug/ml]



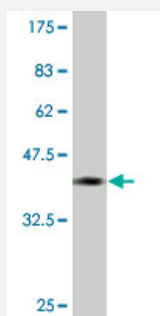
Sandwich ELISA (Recombinant protein)

Detection limit for recombinant GST tagged CDC42BPB is approximately 0.3ng/ml as a capture antibody.



Immunofluorescence

Immunofluorescence of monoclonal antibody to CDC42BPB on A-431 cell.
[antibody concentration 10 ug/ml]



Western Blot detection against Immunogen (36.63 KDa) .

Specification

Product Description	Mouse monoclonal antibody raised against a partial recombinant CDC42BPB.
Immunogen	CDC42BPB (AAD37506, 1580 a.a. ~ 1679 a.a) partial recombinant protein with GST tag. MW of the GST tag alone is 26 KDa.
Sequence	SKMISNPTNFNHVAHMGPGDGMQVLM DLPLSAVPPSQEERPGPAPTNLARQPPSRNKPYSISWP SSGGSEPSVTVPLRMSDPDQDFDKEPDSDSTKHSTP
Host	Mouse
Reactivity	Human, Rat
Interspecies Antigen Sequence	Mouse (91); Rat (92)
Isotype	IgG2a Kappa
Quality Control Testing	Antibody Reactive Against Recombinant Protein. Western Blot detection against Immunogen (36.63 KDa) .
Storage Buffer	In 1x PBS, pH 7.4
Storage Instruction	Store at -20°C or lower. Aliquot to avoid repeated freezing and thawing.

Applications

- Western Blot (Cell lysate)

CDC42BPB monoclonal antibody (M03), clone 2F4. Western Blot analysis of CDC42BPB expression in PC-12 (Cat # L012V1).

[Protocol Download](#)

- Western Blot (Cell lysate)

CDC42BPB monoclonal antibody (M03), clone 2F4 Western Blot analysis of CDC42BPB expression in A-431 (Cat # L015V1).

[Protocol Download](#)

- Western Blot (Recombinant protein)

[Protocol Download](#)

- Immunohistochemistry (Formalin/PFA-fixed paraffin-embedded sections)

Immunoperoxidase of monoclonal antibody to CDC42BPB on formalin-fixed paraffin-embedded human small intestine. [antibody concentration 3 ug/ml]

[Protocol Download](#)

- Sandwich ELISA (Recombinant protein)

Detection limit for recombinant GST tagged CDC42BPB is approximately 0.3ng/ml as a capture antibody.

[Protocol Download](#)

- ELISA

- Immunofluorescence

Immunofluorescence of monoclonal antibody to CDC42BPB on A-431 cell. [antibody concentration 10 ug/ml]

Gene Info — CDC42BPB

Entrez GeneID	9578
---------------	----------------------

GeneBank Accession#	AF128625
---------------------	--------------------------

Protein Accession#	AAD37506
--------------------	--------------------------

Gene Name	CDC42BPB
Gene Alias	KIAA1124, MRCKB
Gene Description	CDC42 binding protein kinase beta (DMPK-like)
Gene Ontology	Hyperlink
Gene Summary	<p>This gene encodes a member of the serine/threonine protein kinase family. The encoded protein contains a Cdc42/Rac-binding p21 binding domain resembling that of PAK kinase. The kinase domain of this protein is most closely related to that of myotonic dystrophy kinase-related ROK. Studies of the similar gene in rat suggested that this kinase may act as a downstream effector of Cdc42 in cytoskeletal reorganization. [provided by RefSeq]</p>
Other Designations	CDC42-binding protein kinase beta CDC42-binding protein kinase beta (DMPK-like) myotonic dystrophy protein kinase-like beta

Disease

- [Tobacco Use Disorder](#)