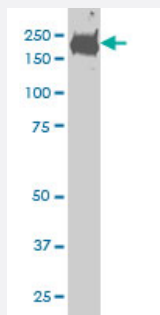


CDC42BPB monoclonal antibody (M02), clone 6G3

Catalog # H00009578-M02

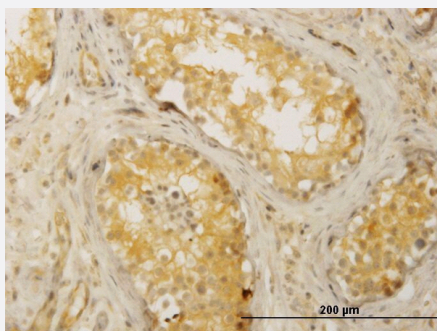
Size 100 ug

Applications



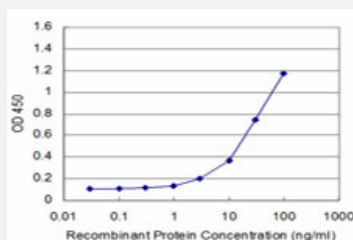
Western Blot (Cell lysate)

CDC42BPB monoclonal antibody (M02), clone 6G3 Western Blot analysis of CDC42BPB expression in HeLa (Cat # L013V1).



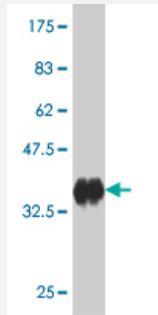
Immunohistochemistry (Formalin/PFA-fixed paraffin-embedded sections)

Immunoperoxidase of monoclonal antibody to CDC42BPB on formalin-fixed paraffin-embedded human testis. [antibody concentration 3 ug/ml]



Sandwich ELISA (Recombinant protein)

Detection limit for recombinant GST tagged CDC42BPB is approximately 1ng/ml as a capture antibody.



Western Blot detection against Immunogen (36.63 KDa) .

Specification

Product Description	Mouse monoclonal antibody raised against a partial recombinant CDC42BPB.
Immunogen	CDC42BPB (AAD37506, 1580 a.a. ~ 1679 a.a) partial recombinant protein with GST tag. MW of the GST tag alone is 26 KDa.
Sequence	SKMISNPTNFNHVAHMGPGDGMQVLMDLPLSAVPPSQEERPGPAPTNLARQPPSRNKPYISWPSGGSEPSVTVPLRMSDPDQDFDKEPDSDSTKHSTP
Host	Mouse
Reactivity	Human
Interspecies Antigen Sequence	Mouse (91); Rat (92)
Isotype	IgG2a Kappa
Quality Control Testing	Antibody Reactive Against Recombinant Protein. Western Blot detection against Immunogen (36.63 KDa) .
Storage Buffer	In 1x PBS, pH 7.4
Storage Instruction	Store at -20°C or lower. Aliquot to avoid repeated freezing and thawing.

Applications

- Western Blot (Cell lysate)

CDC42BPB monoclonal antibody (M02), clone 6G3 Western Blot analysis of CDC42BPB expression in HeLa (Cat # L013V1).

[Protocol Download](#)

- Western Blot (Recombinant protein)

[Protocol Download](#)

- Immunohistochemistry (Formalin/PFA-fixed paraffin-embedded sections)

Immunoperoxidase of monoclonal antibody to CDC42BPB on formalin-fixed paraffin-embedded human testis. [antibody concentration 3 ug/ml]

[Protocol Download](#)

- Sandwich ELISA (Recombinant protein)

Detection limit for recombinant GST tagged CDC42BPB is approximately 1ng/ml as a capture antibody.

[Protocol Download](#)

- ELISA

Gene Info — CDC42BPB

Entrez GeneID [9578](#)

GeneBank Accession# [AF128625](#)

Protein Accession# [AAD37506](#)

Gene Name CDC42BPB

Gene Alias KIAA1124, MRCKB

Gene Description CDC42 binding protein kinase beta (DMPK-like)

Gene Ontology [Hyperlink](#)

Gene Summary This gene encodes a member of the serine/threonine protein kinase family. The encoded protein contains a Cdc42/Rac-binding p21 binding domain resembling that of PAK kinase. The kinase domain of this protein is most closely related to that of myotonic dystrophy kinase-related ROK. Studies of the similar gene in rat suggested that this kinase may act as a downstream effector of Cdc 42 in cytoskeletal reorganization. [provided by RefSeq]

Other Designations CDC42-binding protein kinase beta|CDC42-binding protein kinase beta (DMPK-like)|myotonic dystrophy protein kinase-like beta

Disease

- [Tobacco Use Disorder](#)