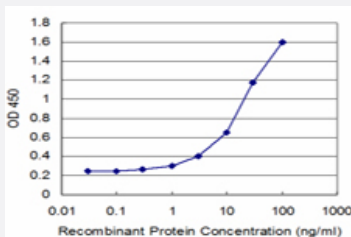


# SPAG6 monoclonal antibody (M05), clone 2F3

Catalog # H00009576-M05

Size 100 ug

## Applications



### Sandwich ELISA (Recombinant protein)

Detection limit for recombinant GST tagged SPAG6 is approximately 1ng/ml as a capture antibody.

## Specification

<b>Product Description</b>	Mouse monoclonal antibody raised against a full-length recombinant SPAG6.
<b>Immunogen</b>	SPAG6 (AAH30585, 1 a.a. ~ 458 a.a) full-length recombinant protein with GST tag. MW of the GST tag alone is 26 KDa.
<b>Sequence</b>	MSQRQVLQVFEQYQKARTQFVQMVAELATRPQNIETLQNAGVMSLLRTLLEDVVPTIQQIAALALGRLANYNDLAEAVVKCDILPQLVYSLAEQNRFYKAAAFVLRVGVKHSPLAQQAQAVDCGALDTLVI CLED FDPGVKEAAAWALRYARHNAELSQAVVDAGAVPLLVLICQEPEIALKGIAASALSDIVKHS PELAQTVVDAGAVAHLAQMILNPDALKHQILSALSQVSKHSVDLAEMVVEAEIFPVVLTCLKDK DEYVKKNASTLIREIAKHTPELSQLVYNAGGVAVIDCIGSCKGNTRLPGIMMLGYVAAHSENLAMA VIISKGVPQLSVCLSEEPEDHIKAAAALWLGQIGRHTPEHARAVAVTNTLPVLLSLYMSTESSEDL QVKS KKA IKNILQKCTYLPALPFLYDAPPNILKHVVGGQFSKVLFPWFIFRYTSAEGGQLSTT
<b>Host</b>	Mouse
<b>Reactivity</b>	Human
<b>Interspecies Antigen Sequence</b>	Mouse (96); Rat (95)
<b>Isotype</b>	IgG2a Kappa
<b>Quality Control Testing</b>	Antibody Reactive Against Recombinant Protein.

## Storage Buffer

In 1x PBS, pH 7.4

## Storage Instruction

Store at -20°C or lower. Aliquot to avoid repeated freezing and thawing.

## Applications

- Sandwich ELISA (Recombinant protein)

Detection limit for recombinant GST tagged SPAG6 is approximately 1ng/ml as a capture antibody.

[Protocol Download](#)

- ELISA

## Gene Info — SPAG6

## Entrez GeneID

[9576](#)

## GeneBank Accession#

[BC030585](#)

## Protein Accession#

[AAH30585](#)

## Gene Name

SPAG6

## Gene Alias

DKFZp434I153, MGC26276, Repro-SA-1, pf16

## Gene Description

sperm associated antigen 6

## Omim ID

[605730](#)

## Gene Ontology

[Hyperlink](#)

## Gene Summary

The correlation of anti-sperm antibodies with cases of unexplained infertility implicates a role for these antibodies in blocking fertilization. Improved diagnosis and treatment of immunologic infertility, as well as identification of proteins for targeted contraception, are dependent on the identification and characterization of relevant sperm antigens. The protein expressed by this gene is recognized by anti-sperm antibodies from an infertile man. This protein localizes to the tail of permeabilized human sperm and contains eight contiguous armadillo repeats, a motif known to mediate protein-protein interactions. Studies in mice suggest that this protein is involved in sperm flagellar motility and maintenance of the structural integrity of mature sperm. Alternatively spliced variants that encode different protein isoforms have been described but the full-length sequences of only two have been determined. [provided by RefSeq]

## Other Designations

OTTHUMP00000019296|OTTHUMP00000019297|axoneme central apparatus protein|sperm flagellar protein

## Disease

- [Alzheimer Disease](#)
- [Genetic Predisposition to Disease](#)