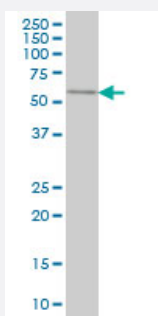


SPAG6 monoclonal antibody (M01), clone 3E3

Catalog # H00009576-M01

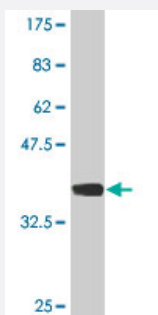
Size 100 ug

Applications



Western Blot (Cell lysate)

SPAG6 monoclonal antibody (M01), clone 3E3 Western Blot analysis of SPAG6 expression in A-431 (Cat # L015V1).



Western Blot detection against Immunogen (37.11 KDa) .

Specification

Product Description

Mouse monoclonal antibody raised against a partial recombinant SPAG6.

Immunogen

SPAG6 (NP_036575, 1 a.a. ~ 100 a.a) partial recombinant protein with GST tag. MW of the GST tag alone is 26 KDa.

Sequence

MSQRQVLQVFEQYQKARTQFVQMVAELATRPQNIETLQNAGVMSLLRTLDDVVPTIQQTAALAL
GRLANYNDLAEAVVKCDILPQLVYSLAEQNRFYK

Host

Mouse

Reactivity

Human

Interspecies Antigen Sequence	Mouse (96); Rat (95)
Isotype	IgG3 Kappa
Quality Control Testing	Antibody Reactive Against Recombinant Protein. Western Blot detection against Immunogen (37.11 KDa) .
Storage Buffer	In 1x PBS, pH 7.4
Storage Instruction	Store at -20°C or lower. Aliquot to avoid repeated freezing and thawing.

Applications

- Western Blot (Cell lysate)

SPAG6 monoclonal antibody (M01), clone 3E3 Western Blot analysis of SPAG6 expression in A-431 (Cat # L015V1).

[Protocol Download](#)

- Western Blot (Recombinant protein)

[Protocol Download](#)

- ELISA

Gene Info — SPAG6

Entrez GeneID	9576
GeneBank Accession#	NM_012443
Protein Accession#	NP_036575
Gene Name	SPAG6
Gene Alias	DKFZp434I153, MGC26276, Repro-SA-1, pf16
Gene Description	sperm associated antigen 6
Omim ID	605730
Gene Ontology	Hyperlink

Gene Summary

The correlation of anti-sperm antibodies with cases of unexplained infertility implicates a role for these antibodies in blocking fertilization. Improved diagnosis and treatment of immunologic infertility, as well as identification of proteins for targeted contraception, are dependent on the identification and characterization of relevant sperm antigens. The protein expressed by this gene is recognized by anti-sperm antibodies from an infertile man. This protein localizes to the tail of permeabilized human sperm and contains eight contiguous armadillo repeats, a motif known to mediate protein-protein interactions. Studies in mice suggest that this protein is involved in sperm flagellar motility and maintenance of the structural integrity of mature sperm. Alternatively spliced variants that encode different protein isoforms have been described but the full-length sequences of only two have been determined. [provided by RefSeq]

Other Designations

OTTHUMP00000019296|OTTHUMP00000019297|axoneme central apparatus protein|sperm flagellar protein

Publication Reference

- [CCDC176 stabilizes microtubule doublets 1 and 9 to ensure proper sperm movement.](#)

Chao Liu, Qianchun Wang, Lusheng Gu, Xiuge Wang, Yingying Yin, Tao Huang, Sai Xiao, Shuwen Zhang, Fuqiang Wang, Tao Zhou, Guangqiong Xu, Liying Wang, Fucheng Dong, Jing Jiang, Mengcheng Luo, Jinsong Li, Haobo Zhang, Zi-Jiang Chen, Wei Ji, Baohua Ji, Hongbin Liu, Wei Li.

Current Biology : CB 2023 Jul; 33(16):3371.

Application: IF, WB-Ti, Mouse, Mouse spermatozoa

Disease

- [Alzheimer Disease](#)
- [Genetic Predisposition to Disease](#)