

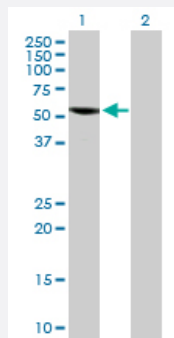
MaxPab®

SPAG6 purified MaxPab rabbit polyclonal antibody (D01P)

Catalog # H00009576-D01P

Size 100 ug

Applications



Western Blot (Transfected lysate)

Western Blot analysis of SPAG6 expression in transfected 293T cell line ([H00009576-T01](#)) by SPAG6 MaxPab polyclonal antibody.

Lane 1: SPAG6 transfected lysate (55.50 KDa).

Lane 2: Non-transfected lysate.

Specification

Product Description

Rabbit polyclonal antibody raised against a full-length human SPAG6 protein.

Immunogen

SPAG6 (NP_036575.1, 1 a.a. ~ 509 a.a) full-length human protein.

Sequence

MSQRQVLQVFEQYQKARTQFVQMVAELATRPQNIETLQNAGVMSLLRTLLEDVVPTIQQTAALAL
GRLANYNDLAEAVVKCDILPQLVYSLAEQNRFYKAAAFVLRVKGKSPQLAQAMDCGALDTL
VICLED FDPGVKEAAAWALRYARHNAELSQAVVDAGAVPLLVLICQEPEIALKRIAASALSDIAKH
SPELAQTVVDAGAVAHLAQMILNPDAKLKHQILSALSQVSKHSVDLAEMVVEAEIFPVVLTCLKD
KDEYVKKNA STLIREIAKHTPELSQLVFNAGGVAVIDCIGSCKGNTRLPGIMMLGYVAAHSENLAM
AVISKGV PQLSVCLSEEPEDHIKAAA AWALGQIGRHTPEHARAVAVTNTLPVLLSLYMSTESSED
LQVKS KKA IKNILQKCTYLPALPFLYDAPPNILKHVVGQFSKVLPHDSKARRLFVTSGGLKKVQEI
KAEPGSLLQEYINSINSCYPPEIVRYSPGYSDTLLQRVDSYQPLNN

Host

Rabbit

Reactivity

Human

Interspecies Antigen Sequence

Mouse (96); Rat (95)

Quality Control Testing

Antibody reactive against mammalian transfected lysate.

Storage Buffer

In 1x PBS, pH 7.4

Storage Instruction

Store at -20°C or lower. Aliquot to avoid repeated freezing and thawing.

Applications

- Western Blot (Transfected lysate)

Western Blot analysis of SPAG6 expression in transfected 293T cell line ([H00009576-T01](#)) by SPAG6 MaxPab polyclonal antibody.

Lane 1: SPAG6 transfected lysate(55.50 KDa).

Lane 2: Non-transfected lysate.

[Protocol Download](#)

Gene Info — SPAG6

Entrez GeneID

[9576](#)

GeneBank Accession#

[NM_012443.2](#)

Protein Accession#

[NP_036575.1](#)

Gene Name

SPAG6

Gene Alias

DKFZp434I153, MGC26276, Repro-SA-1, pf16

Gene Description

sperm associated antigen 6

Omim ID

[605730](#)

Gene Ontology

[Hyperlink](#)

Gene Summary

The correlation of anti-sperm antibodies with cases of unexplained infertility implicates a role for these antibodies in blocking fertilization. Improved diagnosis and treatment of immunologic infertility, as well as identification of proteins for targeted contraception, are dependent on the identification and characterization of relevant sperm antigens. The protein expressed by this gene is recognized by anti-sperm antibodies from an infertile man. This protein localizes to the tail of permeabilized human sperm and contains eight contiguous armadillo repeats, a motif known to mediate protein-protein interactions. Studies in mice suggest that this protein is involved in sperm flagellar motility and maintenance of the structural integrity of mature sperm. Alternatively spliced variants that encode different protein isoforms have been described but the full-length sequences of only two have been determined. [provided by RefSeq]

Other Designations

OTTHUMP00000019296|OTTHUMP00000019297|axoneme central apparatus protein|sperm flagellar protein

Disease

- [Alzheimer Disease](#)
- [Genetic Predisposition to Disease](#)