

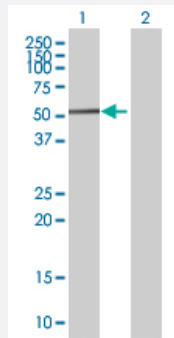
MaxPab®

# SPAG6 MaxPab mouse polyclonal antibody (B01P)

Catalog # H00009576-B01P

Size 50 ug

## Applications



### Western Blot (Transfected lysate)

Western Blot analysis of SPAG6 expression in transfected 293T cell line ([H00009576-T01](#)) by SPAG6 MaxPab polyclonal antibody.

Lane 1: SPAG6 transfected lysate(55.99 KDa).

Lane 2: Non-transfected lysate.

## Specification

Product Description	Mouse polyclonal antibody raised against a full-length human SPAG6 protein.
Immunogen	SPAG6 (NP_036575.1, 1 a.a. ~ 509 a.a) full-length human protein.
Sequence	MSQRQVLQVFEQYQKARTQFVQMVAELATRPQNIETLQNAGVMSLLRTLLEDVVPTIQQTAALAL GRLANYNDLAEAVVKCDILPQLVYSLAEQNRIFYKAAAFVLRVKGKSPQLAQAMDCGALDTL VICLED FDPGVKEAAAWALRYARHNAELSQAVVDAGAVPLLVLICIQEPEIALKRIAASALSDIAKH SPELAQTVVDAGAVAHLAQMILNPDAKLKHQILSALSQVSKHSVDLAEMVVEAEIFPVVLTCLKD KDEYVKKNA STLIREIAKHTPELSQLVFNAGGVAVIDCIGSCKGNTRLPGIMMLGYVAAHSENLAM AVISKGV PQLSVCLSEEPEDHIKAAAWALGQIGRHTPEHARAVAVTNTLPVLLSLYMSTESSED LQVKS KKA IKNILQKCTYLPALPFLYDAPPNILKHVVGGQFSKVLPHDSKARRLFVTSGGLKKVQEI KAEPG SLLQEYINSINSCYP EEMRYYS PGYSDTLLQRVDSYQPLNN
Host	Mouse
Reactivity	Human
Interspecies Antigen Sequence	Mouse (96); Rat (95)
Quality Control Testing	Antibody reactive against mammalian transfected lysate.

## Storage Buffer

In 1x PBS, pH 7.4

## Storage Instruction

Store at -20°C or lower. Aliquot to avoid repeated freezing and thawing.

## Applications

- Western Blot (Transfected lysate)

Western Blot analysis of SPAG6 expression in transfected 293T cell line ([H00009576-T01](#)) by SPAG6 MaxPab polyclonal antibody.

Lane 1: SPAG6 transfected lysate(55.99 KDa).

Lane 2: Non-transfected lysate.

[Protocol Download](#)

## Gene Info — SPAG6

## Entrez GeneID

[9576](#)

## GeneBank Accession#

[NM\\_012443.2](#)

## Protein Accession#

[NP\\_036575.1](#)

## Gene Name

SPAG6

## Gene Alias

DKFZp434I153, MGC26276, Repro-SA-1, pf16

## Gene Description

sperm associated antigen 6

## Omim ID

[605730](#)

## Gene Ontology

[Hyperlink](#)

## Gene Summary

The correlation of anti-sperm antibodies with cases of unexplained infertility implicates a role for these antibodies in blocking fertilization. Improved diagnosis and treatment of immunologic infertility, as well as identification of proteins for targeted contraception, are dependent on the identification and characterization of relevant sperm antigens. The protein expressed by this gene is recognized by anti-sperm antibodies from an infertile man. This protein localizes to the tail of permeabilized human sperm and contains eight contiguous armadillo repeats, a motif known to mediate protein-protein interactions. Studies in mice suggest that this protein is involved in sperm flagellar motility and maintenance of the structural integrity of mature sperm. Alternatively spliced variants that encode different protein isoforms have been described but the full-length sequences of only two have been determined. [provided by RefSeq]

## Other Designations

OTTHUMP00000019296|OTTHUMP00000019297|axoneme central apparatus protein|sperm flagellar protein

## Disease

- [Alzheimer Disease](#)
- [Genetic Predisposition to Disease](#)