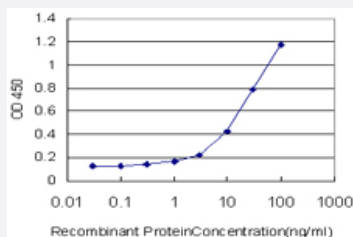


GDF3 monoclonal antibody (M01), clone 2B10

Catalog # H00009573-M01

Size 100 ug

Applications



Sandwich ELISA (Recombinant protein)

Detection limit for recombinant GST tagged GDF3 is approximately 0.3ng/ml as a capture antibody.

Specification

Product Description	Mouse monoclonal antibody raised against a partial recombinant GDF3.
Immunogen	GDF3 (NP_065685, 265 a.a. ~ 364 a.a) partial recombinant protein with GST tag. MW of the GST tag alone is 26 KDa.
Sequence	HRHQLFINFRDLGWHKWIAPKGFMANYPCHGECFSLTISLNSSNYAFMQALMHAVDPEIPQAVCI PTKLSPISMLYQDNNNDNVILRHYEDMVVDECGCG
Host	Mouse
Reactivity	Human
Interspecies Antigen Sequence	Mouse (70); Rat (68)
Isotype	IgG2b Kappa
Quality Control Testing	Antibody Reactive Against Recombinant Protein.
Storage Buffer	In 1x PBS, pH 7.4
Storage Instruction	Store at -20°C or lower. Aliquot to avoid repeated freezing and thawing.

Applications

- Sandwich ELISA (Recombinant protein)

Detection limit for recombinant GST tagged GDF3 is approximately 0.3ng/ml as a capture antibody.

[Protocol Download](#)

- ELISA

Gene Info — GDF3

Entrez GeneID	9573
---------------	----------------------

GeneBank Accession#	NM_020634
---------------------	---------------------------

Protein Accession#	NP_065685
--------------------	---------------------------

Gene Name	GDF3
-----------	------

Gene Alias	-
------------	---

Gene Description	growth differentiation factor 3
------------------	---------------------------------

Omim ID	606522
---------	------------------------

Gene Ontology	Hyperlink
---------------	---------------------------

Gene Summary	The protein encoded by this gene is a member of the bone morphogenetic protein (BMP) family and the TGF-beta superfamily. This group of proteins is characterized by a polybasic proteolytic processing site which is cleaved to produce a mature protein containing seven conserved cysteine residues. The members of this family are regulators of cell growth and differentiation in both embryonic and adult tissues. [provided by RefSeq]
--------------	--

Other Designations	-
--------------------	---

Disease

- [Genetic Predisposition to Disease](#)
- [Obesity](#)
- [Ovarian Failure](#)
- [Polycystic Ovary Syndrome](#)

- [Puberty](#)
- [Thrombophilia](#)
- [Tobacco Use Disorder](#)