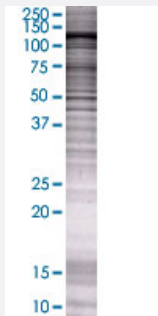


BCAR1 293T Cell Transient Overexpression Lysate(Denatured)

Catalog # H00009564-T01

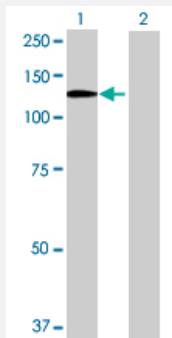
Size 100 uL

Applications



SDS-PAGE Gel

BCAR1 transfected lysate.



Western Blot

Lane 1: BCAR1 transfected lysate (95.81 KDa)

Lane 2: Non-transfected lysate.

Specification

Transfected Cell Line	293T
Plasmid	pCMV-BCAR1 full-length
Host	Human
Theoretical MW (kDa)	95.81
Interspecies Antigen Sequence	Mouse (90); Rat (91)

Quality Control Testing

Transient overexpression cell lysate was tested with Anti-BCAR1 antibody ([H00009564-B01](#)) by Western Blots.
SDS-PAGE Gel
BCAR1 transfected lysate.
Western Blot
Lane 1: BCAR1 transfected lysate (95.81 KDa)
Lane 2: Non-transfected lysate.

Storage Buffer

1X Sample Buffer (50 mM Tris-HCl, 2% SDS, 10% glycerol, 300 mM 2-mercaptoethanol, 0.01% Bromophenol blue)

Storage Instruction

Store at -80°C. Aliquot to avoid repeated freezing and thawing.

Applications

- Western Blot

Gene Info — BCAR1

Entrez GeneID[9564](#)**GeneBank Accession#**[BC062556.1](#)**Protein Accession#**[AAH62556.1](#)**Gene Name**

BCAR1

Gene Alias

CAS, CAS1, CASS1, CRKAS, P130Cas

Gene Description

breast cancer anti-estrogen resistance 1

Omim ID[602941](#)**Gene Ontology**[Hyperlink](#)**Gene Summary**

BCAR1, or CAS, is an Src (MIM 190090) family kinase substrate involved in various cellular events, including migration, survival, transformation, and invasion (Sawada et al., 2006 [PubMed 17129785]).[supplied by OMIM]

Other Designations

Cas scaffolding protein family member 1|Crk-associated substrate p130Cas

Pathway

- [Chemokine signaling pathway](#)

- [Focal adhesion](#)
- [Leukocyte transendothelial migration](#)
- [Regulation of actin cytoskeleton](#)

Disease

- [Genetic Predisposition to Disease](#)