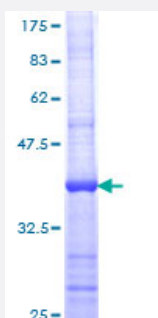


BCAR1 (Human) Recombinant Protein (Q01)

Catalog # H00009564-Q01

Size 25 ug, 10 ug

Applications



Specification

Product Description	Human BCAR1 partial ORF (NP_055382, 771 a.a. - 870 a.a.) recombinant protein with GST-tag at N-terminal.
Sequence	TNQPPKIFVAHSKFVILSAHKLVFIGDLSRQAKAADVRSQVTHYSNLLCDLLRGIVATTKAAALQY PSPSAAQDMVERVKELGHSTQQFRRVLGQLAAA
Host	Wheat Germ (in vitro)
Theoretical MW (kDa)	36.74
Interspecies Antigen Sequence	Mouse (90); Rat (91)
Preparation Method	in vitro wheat germ expression system
Purification	Glutathione Sepharose 4 Fast Flow
Quality Control Testing	12.5% SDS-PAGE Stained with Coomassie Blue.
Storage Buffer	50 mM Tris-HCl, 10 mM reduced Glutathione, pH=8.0 in the elution buffer.
Storage Instruction	Store at -80°C. Aliquot to avoid repeated freezing and thawing.
Note	Best use within three months from the date of receipt of this protein.

Applications

- Enzyme-linked Immunoabsorbent Assay
- Western Blot (Recombinant protein)
- Antibody Production
- Protein Array

Gene Info — BCAR1

Entrez GeneID	9564
GeneBank Accession#	NM_014567
Protein Accession#	NP_055382
Gene Name	BCAR1
Gene Alias	CAS, CAS1, CASS1, CRKAS, P130Cas
Gene Description	breast cancer anti-estrogen resistance 1
Omim ID	602941
Gene Ontology	Hyperlink
Gene Summary	BCAR1, or CAS, is an Src (MIM 190090) family kinase substrate involved in various cellular events, including migration, survival, transformation, and invasion (Sawada et al., 2006 [PubMed 1712 9785]).[supplied by OMIM]
Other Designations	Cas scaffolding protein family member 1 Crk-associated substrate p130Cas

Pathway

- [Chemokine signaling pathway](#)
- [Focal adhesion](#)
- [Leukocyte transendothelial migration](#)
- [Regulation of actin cytoskeleton](#)

Disease

- [Genetic Predisposition to Disease](#)