

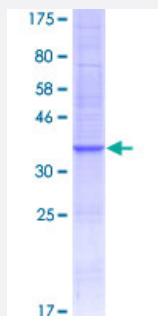
Full-Length

CCL4L1 (Human) Recombinant Protein (P01)

Catalog # H00009560-P01

Size 25 ug, 10 ug

Applications



Specification

Product Description	Human CCL4L1 full-length ORF (AA48785.1, 1 a.a. - 92 a.a.) recombinant protein with GST-tag at N-terminal.
Sequence	MKLCVTVLSLLVLVAAFCSLALSAPMGSDPPTACCFSTARKLPRNFVVDYYETSSLCSQPAVVFQTKRGKQVCADPSESWWQEYVDLELN
Host	Wheat Germ (in vitro)
Theoretical MW (kDa)	37.07
Preparation Method	in vitro wheat germ expression system
Purification	Glutathione Sepharose 4 Fast Flow
Quality Control Testing	12.5% SDS-PAGE Stained with Coomassie Blue.
Storage Buffer	50 mM Tris-HCl, 10 mM reduced Glutathione, pH=8.0 in the elution buffer.
Storage Instruction	Store at -80°C. Aliquot to avoid repeated freezing and thawing.
Note	Best use within three months from the date of receipt of this protein.

Applications

- Enzyme-linked Immunoabsorbent Assay
- Western Blot (Recombinant protein)
- Antibody Production
- Protein Array

Gene Info — CCL4L1

Entrez GeneID [9560](#)

GeneBank Accession# [BC148784](#)

Protein Accession# [AA48785.1](#)

Gene Name CCL4L1

Gene Alias AT744.2, CCL4L, LAG-1, LAG1, SCYA4L

Gene Description chemokine (C-C motif) ligand 4-like 1

Omim ID [603782](#)

Gene Ontology [Hyperlink](#)

Gene Summary This gene is one of several cytokine genes clustered on the q-arm of chromosome 17. Cytokines are a family of secreted proteins involved in immunoregulatory and inflammatory processes. This protein is similar to CCL4 which inhibits HIV entry by binding to the cellular receptor CCR5. The copy number of this gene varies among individuals; most individuals have 1-5 copies in the diploid genome, although rare individuals do not contain this gene at all. The human genome reference assembly contains two copies of this gene. This record represents the more centromeric gene. [provided by RefSeq]

Other Designations lymphocyte activation gene 1|macrophage inflammatory protein-1b2|small inducible cytokine 4-like|small inducible cytokine A4-like, chemokine (C-C motif) ligand 4-like

Pathway

- [Chemokine signaling pathway](#)

- [Cytokine-cytokine receptor interaction](#)

Disease

- [Acquired Immunodeficiency Syndrome](#)
- [Acute Disease](#)
- [Chronic Disease](#)
- [Disease Progression](#)
- [Genetic Predisposition to Disease](#)
- [HIV Infections](#)
- [Pregnancy Complications](#)