

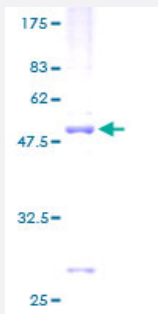
Full-Length

SEC22L1 (Human) Recombinant Protein (P01)

Catalog # H00009554-P01

Size 25 ug, 10 ug

Applications



Specification

Product Description	Human SEC22L1 full-length ORF (AAH01364, 1 a.a. - 215 a.a.) recombinant protein with GST-tag at N-terminal.
Sequence	MVLLTMIARVADGLPLAASMQEDEQSGRDLQQYQSQAKQLFRKLNEQSPTRCTLEAGAMTFHYIEQGVCYLVLCEAAFPKKLAFAYLEDLHSEFDEQHGKKVPTVSRPYSFIEFDTFIQTKKLYIDSRARRNLGSINTELQDVQRIMVANIEEVLQRGEALSALDSKANNLSSLSKKYRQDAKYLNMRSTYAKLAAVAVFFIMLVYVRFWWL
Host	Wheat Germ (in vitro)
Theoretical MW (kDa)	49.39
Interspecies Antigen Sequence	Mouse (100); Rat (100)
Preparation Method	in vitro wheat germ expression system
Purification	Glutathione Sepharose 4 Fast Flow
Quality Control Testing	12.5% SDS-PAGE Stained with Coomassie Blue.
Storage Buffer	50 mM Tris-HCl, 10 mM reduced Glutathione, pH=8.0 in the elution buffer.
Storage Instruction	Store at -80°C. Aliquot to avoid repeated freezing and thawing.

Note

Best use within three months from the date of receipt of this protein.

Applications

- Enzyme-linked Immunoabsorbent Assay
- Western Blot (Recombinant protein)
- Antibody Production
- Protein Array

Gene Info — SEC22B

Entrez GeneID	9554
GeneBank Accession#	BC001364
Protein Accession#	AAH01364
Gene Name	SEC22B
Gene Alias	ERS-24, SEC22L1
Gene Description	SEC22 vesicle trafficking protein homolog B (S. cerevisiae)
Omim ID	604029
Gene Ontology	Hyperlink
Gene Summary	The protein encoded by this gene is a member of the SEC22 family of vesicle trafficking proteins. It seems to complex with SNARE and it is thought to play a role in the ER-Golgi protein trafficking. This protein has strong similarity to Mus musculus and Cricetulus griseus proteins
Other Designations	SEC22 vesicle trafficking protein homolog B SEC22 vesicle trafficking protein-like 1 SEC22, vesicle trafficking protein-like 1

Pathway

- [SNARE interactions in vesicular transport](#)