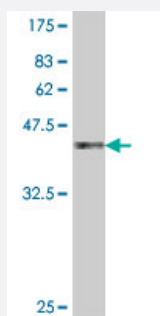


SEC22L1 polyclonal antibody (A01)

Catalog # H00009554-A01

Size 50 uL

Applications



Western Blot detection against Immunogen (38.21 KDa) .

Specification

Product Description	Mouse polyclonal antibody raised against a partial recombinant SEC22L1.
Immunogen	SEC22L1 (NP_004883, 1 a.a. ~ 110 a.a) partial recombinant protein with GST tag.
Sequence	MVLLTMIARVADGLPLAASMQEDEQSGRDLQQYQSQAKQLFRKLNEQSPTRCTLEAGAMTFHYII EQGVCYLVLCEAAFPKKLAFAYLEDLHSEFDEQHGKKVPTVSRPY
Host	Mouse
Reactivity	Human
Interspecies Antigen Sequence	Mouse (100); Rat (100)
Quality Control Testing	Antibody Reactive Against Recombinant Protein. Western Blot detection against Immunogen (38.21 KDa) .
Storage Buffer	50 % glycerol
Storage Instruction	Store at -20°C or lower. Aliquot to avoid repeated freezing and thawing.

Applications

- Western Blot (Recombinant protein)

[Protocol Download](#)

- ELISA

Gene Info — SEC22B

Entrez GeneID [9554](#)

GeneBank Accession# [NM_004892](#)

Protein Accession# [NP_004883](#)

Gene Name SEC22B

Gene Alias ERS-24, SEC22L1

Gene Description SEC22 vesicle trafficking protein homolog B (S. cerevisiae)

Omim ID [604029](#)

Gene Ontology [Hyperlink](#)

Gene Summary The protein encoded by this gene is a member of the SEC22 family of vesicle trafficking proteins. It seems to complex with SNARE and it is thought to play a role in the ER-Golgi protein trafficking. This protein has strong similarity to Mus musculus and Cricetulus griseus proteins

Other Designations SEC22 vesicle trafficking protein homolog B|SEC22 vesicle trafficking protein-like 1|SEC22, vesicle trafficking protein-like 1

Pathway

- [SNARE interactions in vesicular transport](#)