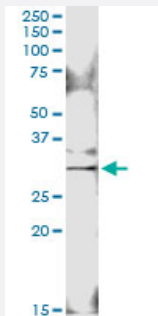


# GOSR1 (Human) IP-WB Antibody Pair

Catalog # H00009527-PW1

Size 1 Set

## Applications



Immunoprecipitation of GOSR1 transfected lysate using rabbit polyclonal anti-GOSR1 and Protein A Magnetic Bead ([U0007](#)), and immunoblotted with mouse polyclonal anti-GOSR1.

## Specification

<b>Product Description</b>	This IP-WB antibody pair set comes with one antibody for immunoprecipitation and another to detect the precipitated protein in western blot.
<b>Reactivity</b>	Human
<b>Quality Control Testing</b>	Immunoprecipitation-Western Blot (IP-WB) Immunoprecipitation of GOSR1 transfected lysate using rabbit polyclonal anti-GOSR1 and Protein A Magnetic Bead ( <a href="#">U0007</a> ), and immunoblotted with mouse polyclonal anti-GOSR1.
<b>Supplied Product</b>	Antibody pair set content: 1. Antibody pair for IP: rabbit polyclonal anti-GOSR1 (300 ul) 2. Antibody pair for WB: mouse polyclonal anti-GOSR1 (50 ul)
<b>Storage Instruction</b>	Store reagents of the antibody pair set at -20°C or lower. Please aliquot to avoid repeated freeze thaw cycle. Reagents should be returned to -20°C storage immediately after use.

## Applications

- Immunoprecipitation-Western Blot

[Protocol Download](#)

## Gene Info — GOSR1

Entrez GeneID	<a href="#">9527</a>
Gene Name	GOSR1
Gene Alias	GOLIM2, GOS-28, GOS28, GOS28/P28, GS28, P28
Gene Description	golgi SNAP receptor complex member 1
Omim ID	<a href="#">604026</a>
Gene Ontology	<a href="#">Hyperlink</a>
Gene Summary	This gene encodes a trafficking membrane protein which transports proteins among the endoplasmic reticulum and the Golgi and between Golgi compartments. This protein is considered an essential component of the Golgi SNAP receptor (SNARE) complex. Alternatively spliced transcript variants encoding distinct isoforms have been found for this gene. [provided by RefSeq]
Other Designations	28 kDa cis-Golgi SNARE p28 Golgi SNARE 28 kDa cis-golgi SNARE golgi integral membrane protein 2

## Pathway

- [SNARE interactions in vesicular transport](#)