

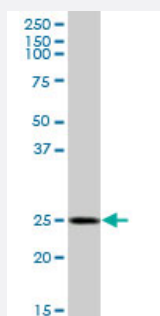
MaxPab®

GOSR1 purified MaxPab mouse polyclonal antibody (B01P)

Catalog # H00009527-B01P

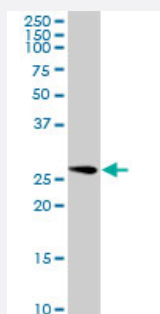
Size 50 ug

Applications



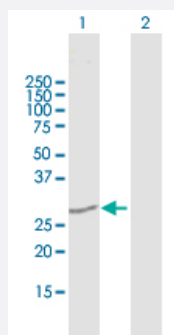
Western Blot (Tissue lysate)

GOSR1 MaxPab polyclonal antibody. Western Blot analysis of GOSR1 expression in human liver.



Western Blot (Cell lysate)

GOSR1 MaxPab polyclonal antibody. Western Blot analysis of GOSR1 expression in A-431.

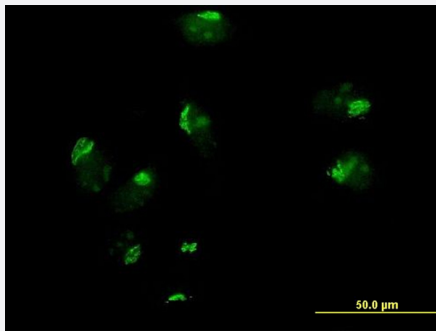


Western Blot (Transfected lysate)

Western Blot analysis of GOSR1 expression in transfected 293T cell line ([H00009527-T01](#)) by GOSR1 MaxPab polyclonal antibody.

Lane1:GOSR1 transfected lysate(27.5 KDa).

Lane2:Non-transfected lysate.



Immunofluorescence

Immunofluorescence of purified MaxPab antibody to GOSR1 on HeLa cell.
[antibody concentration 10 ug/ml]

Specification

Product Description	Mouse polyclonal antibody raised against a full-length human GOSR1 protein.
Immunogen	GOSR1 (NP_004862.1, 1 a.a. ~ 250 a.a) full-length human protein.
Sequence	MAAGTSSYWEDLRKQARQLENELDKLVSFSLKCTSYSHSSTRDGRRDRYSSDTPLLNGSSQD RMFETMAIEIEQLLARLTGVNDKMAEYTNAGVPSLNAALMHTLQRHRDILQDYTHEFHKTKANFM AIRERENLMGSRVDIESYKSGGVNNRRTFLKEHDHLRNSDRLIEETISIAMATKENMTSQRGM LKSIIHSMNTLANRFPVNSLIQRINLRKRRDSLILGGVIGICTILLLLYAFH
Host	Mouse
Reactivity	Human
Quality Control Testing	Antibody reactive against mammalian transfected lysate.
Storage Buffer	In 1x PBS, pH 7.4
Storage Instruction	Store at -20°C or lower. Aliquot to avoid repeated freezing and thawing.

Applications

- Western Blot (Tissue lysate)

GOSR1 MaxPab polyclonal antibody. Western Blot analysis of GOSR1 expression in human liver.

[Protocol Download](#)

- Western Blot (Cell lysate)

GOSR1 MaxPab polyclonal antibody. Western Blot analysis of GOSR1 expression in A-431.

[Protocol Download](#)

- Western Blot (Transfected lysate)

Western Blot analysis of GOSR1 expression in transfected 293T cell line ([H00009527-T01](#)) by GOSR1 MaxPab polyclonal antibody.

Lane1:GOSR1 transfected lysate(27.5 KDa).

Lane2:Non-transfected lysate.

[Protocol Download](#)

- Immunofluorescence

Immunofluorescence of purified MaxPab antibody to GOSR1 on HeLa cell. [antibody concentration 10 ug/ml]

Gene Info — GOSR1

Entrez GeneID [9527](#)

GeneBank Accession# [NM_004871.2](#)

Protein Accession# [NP_004862.1](#)

Gene Name GOSR1

Gene Alias GOLIM2, GOS-28, GOS28, GOS28/P28, GS28, P28

Gene Description golgi SNAP receptor complex member 1

Omim ID [604026](#)

Gene Ontology [Hyperlink](#)

Gene Summary This gene encodes a trafficking membrane protein which transports proteins among the endoplasmic reticulum and the Golgi and between Golgi compartments. This protein is considered an essential component of the Golgi SNAP receptor (SNARE) complex. Alternatively spliced transcript variants encoding distinct isoforms have been found for this gene. [provided by RefSeq]

Other Designations 28 kDa cis-Golgi SNARE p28|Golgi SNARE 28 kDa|cis-golgi SNARE|golgi integral membrane protein 2

Pathway

- [SNARE interactions in vesicular transport](#)