

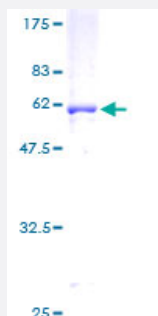
Full-Length

# SCAMP1 (Human) Recombinant Protein (P01)

Catalog # H00009522-P01

Size 25 ug, 10 ug

## Applications



## Specification

### Product Description

Human SCAMP1 full-length ORF ( AAH34048, 1 a.a. - 338 a.a.) recombinant protein with GST-tag at N-terminal.

### Sequence

MSDFDSNPFADPDLNNPFKDPSVTQVTRNPPGLDEYNPFSDSRTPPPGGVKMPNVPNTQPAI  
MKPTEEHAYTQIAKEHALAQAEELLKRQEELERKAAELDRREREMQNLSQHGRKNNWPPLPSNF  
PVGPCFYQDFSVDIPVEFQKTVKLMYYLWMFHAVTLFLNIFGCLAWFCVDSARAVDFGLSILWFL  
LFTPCSFVCWYRPLYGAFRSDSSFRFFVFFVYICQFAVHVLQAAGFHNWGNCGWISSLTGLNQ  
NIPVGIMMIIAALFTASAVISLVMFKKVHGLYRTTGASFKAQQEFATGVMSNKTQTAANAATA  
ASSAAQNAFKGNQI

### Host

Wheat Germ (in vitro)

### Theoretical MW (kDa)

62.92

### Preparation Method

[in vitro wheat germ expression system](#)

### Purification

Glutathione Sepharose 4 Fast Flow

### Quality Control Testing

12.5% SDS-PAGE Stained with Coomassie Blue.

### Storage Buffer

50 mM Tris-HCl, 10 mM reduced Glutathione, pH=8.0 in the elution buffer.

### Storage Instruction

Store at -80°C. Aliquot to avoid repeated freezing and thawing.

## Note

Best use within three months from the date of receipt of this protein.

## Applications

- Enzyme-linked Immunoabsorbent Assay
- Western Blot (Recombinant protein)
- Antibody Production
- Protein Array

## Gene Info — SCAMP1

Entrez GeneID [9522](#)

GeneBank Accession# [BC034048](#)

Protein Accession# [AAH34048](#)

Gene Name SCAMP1

Gene Alias SCAMP, SCAMP37

Gene Description secretory carrier membrane protein 1

Omim ID [606911](#)

Gene Ontology [Hyperlink](#)

**Gene Summary** This gene product belongs to the SCAMP family of proteins which are secretory carrier membrane proteins. They function as carriers to the cell surface in post-golgi recycling pathways. Different family members are highly related products of distinct genes, and are usually expressed together. These findings suggest that the SCAMPs may function at the same site during vesicular transport rather than in separate pathways. [provided by RefSeq]

Other Designations -

## Disease

- [Tobacco Use Disorder](#)